

Het BCP door een geologisch/archeologische bril



Maikel De Clercq
Maikel.DeClercq@Ugent.be

reWalls.com



Inhoud

1. Wat is de relatie tussen geologie en archeologie?

2. Hoe zagen de verdronken landschappen er uit?

- topografie
- landschapselementen

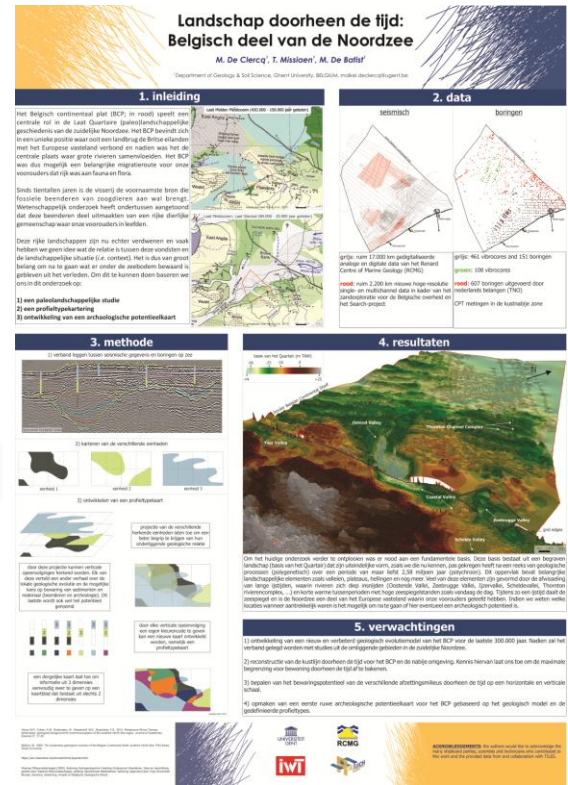
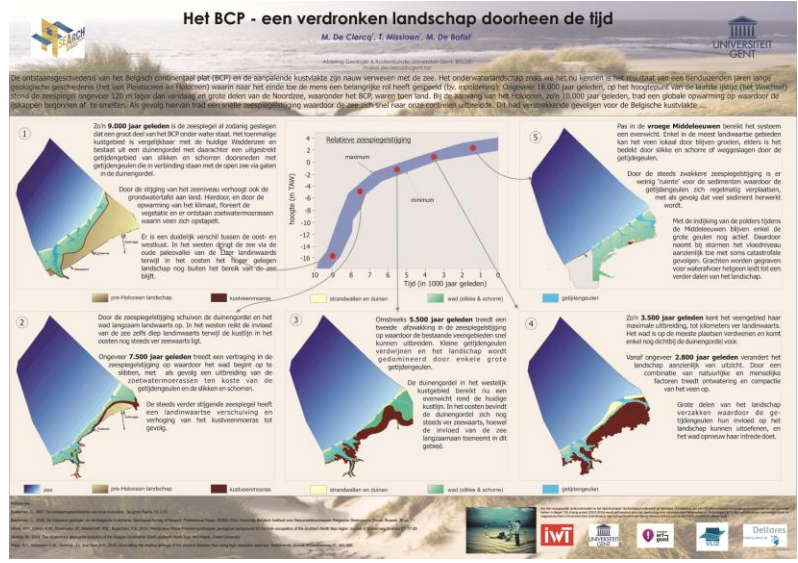
3. Hoe zijn deze landschappen tot stand gekomen? (poster)

4. Hoe vertaalt dit zich in de data?

- Oostendevallei

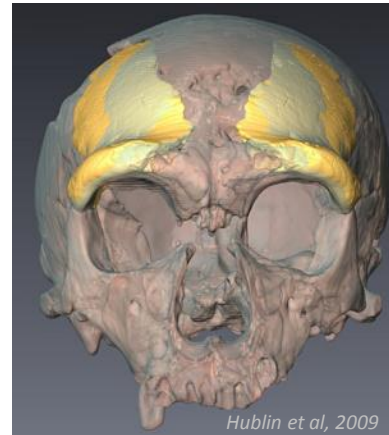
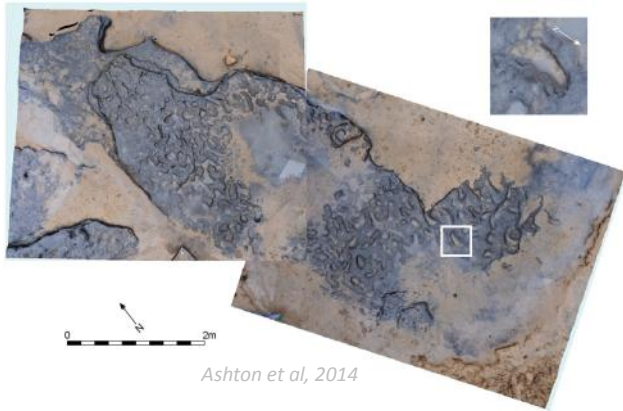
5. Wat is het archeologisch potentieel van deze resterende afzettingen?

6. Hoe kunnen we een inzicht krijgen in het archeologisch potentieel? (poster)



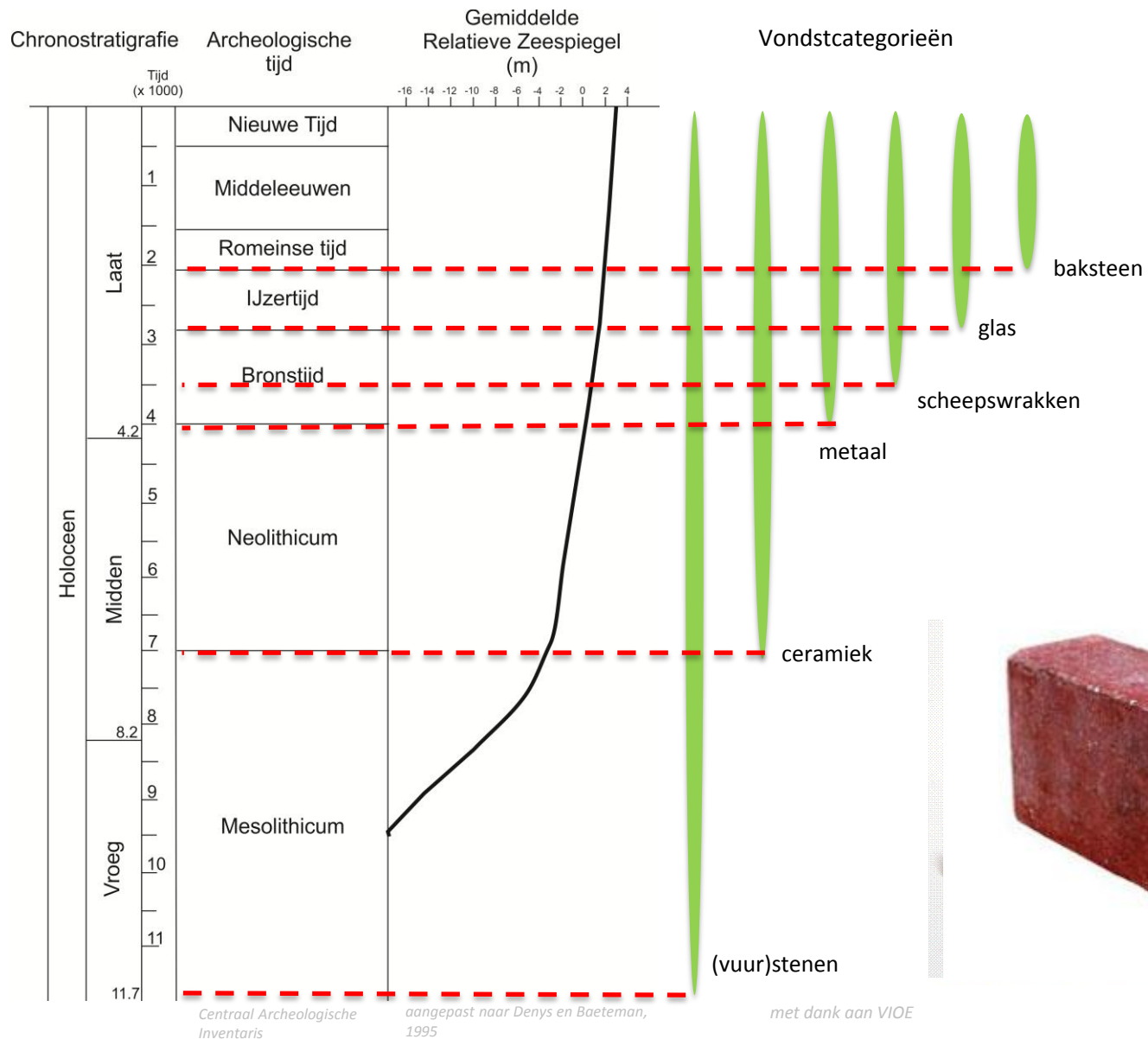
1. Wat is de relatie tussen geologie en archeologie?

Wat is archeologisch erfgoed in en rondom de Noordzee? = brede waaier van menselijke en dierlijke sporen en ook menselijke artefacten



Wat is de relatie met de geologie?
Wat is de ouderdom en context van al deze vondsten?

1. Wat is de relatie tussen geologie en archeologie?



1. Wat is de relatie tussen geologie en archeologie?

paleontologie

geologie

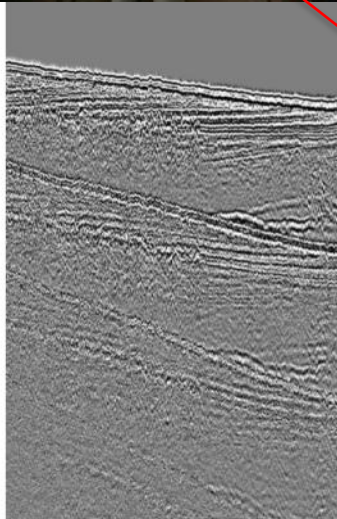
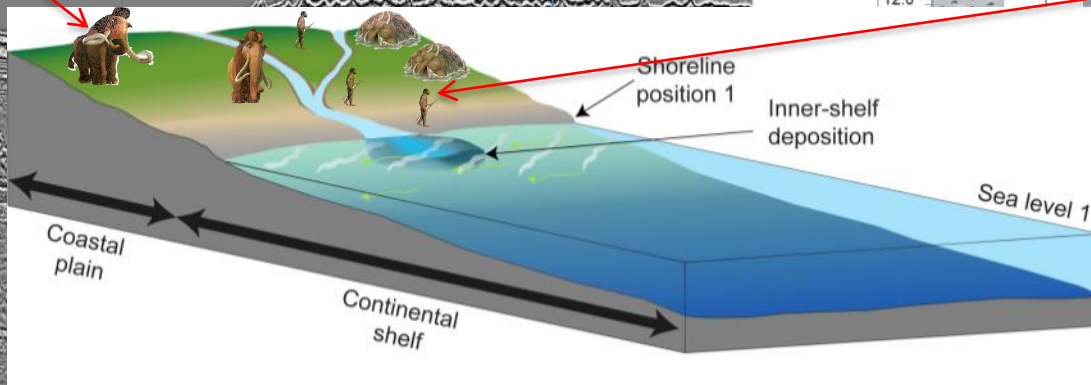
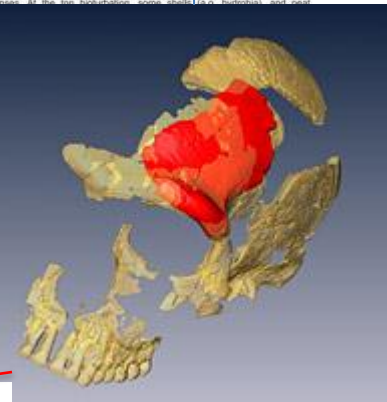
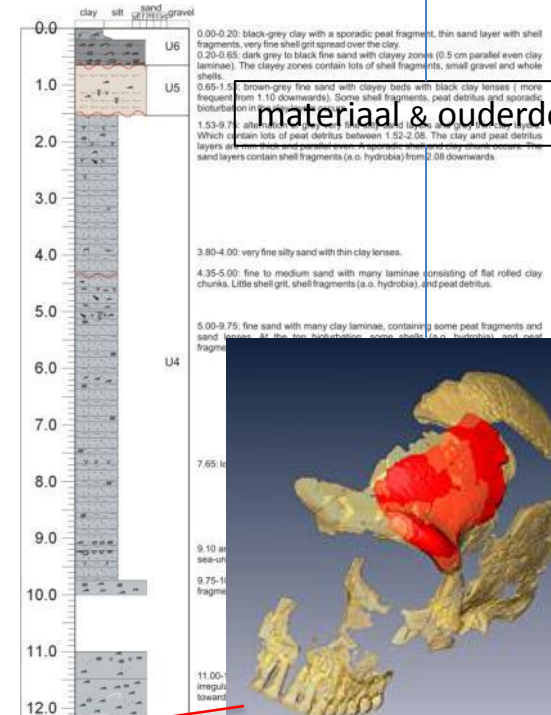
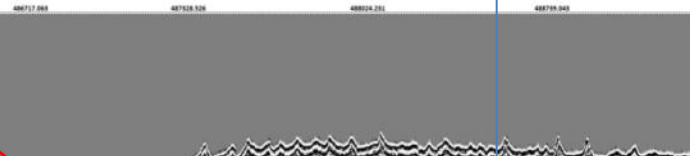
archeologie

beenderen & ouderdom

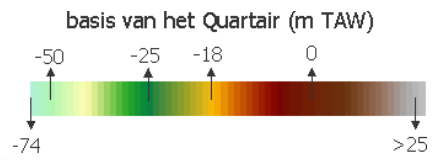
seismiek & boorkernen

materiaal & ouderdom

afzettingsmilieus

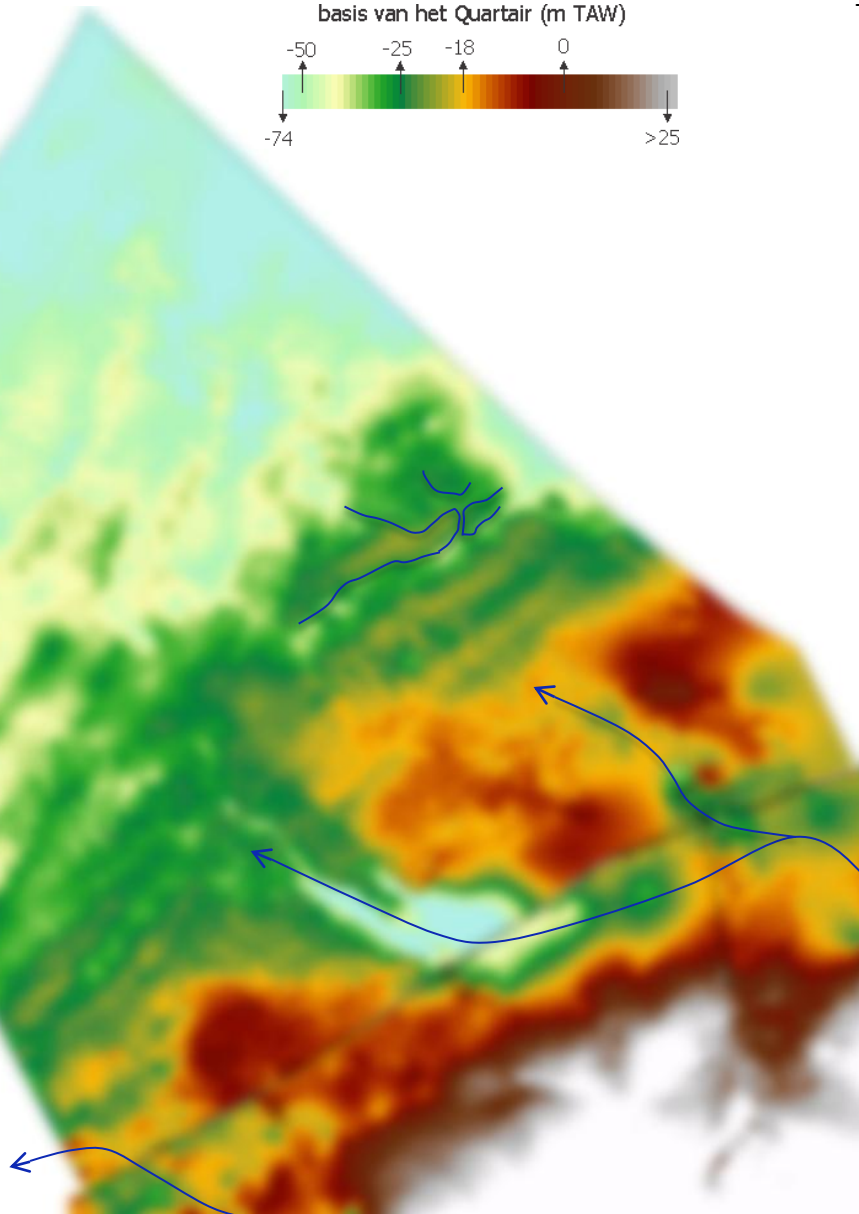


2. Hoe zagen de verdronken landschappen er uit?



1. rivieren:

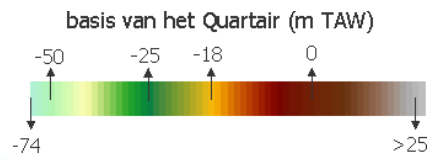
- Schelde: Kustvallei, Oostende Vallei, Zeebrugge Vallei
- IJzer
- Thornton



De Clercq and Hademenos (unpublished)

0 km 10 km

2. Hoe zagen de verdronken landschappen er uit?



1. rivieren:

- Schelde: Kustvallei, Oostende Vallei, Zeebrugge Vallei
- IJzer
- Thornton

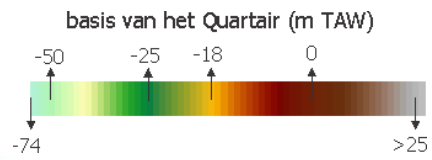
2. kustnabije plateaus



De Clercq and Hademenos (unpublished)

0 km 10 km

2. Hoe zagen de verdronken landschappen er uit?



1. rivieren:

- Schelde: Kustvallei, Oostende Vallei, Zeebrugge Vallei
- IJzer
- Thornton

2. kustnabije plateaus

3. hellingen:

- *Nearshore slope*
- *Middle scarp*
- *Offshore scarp*



De Clercq and Hademenos (unpublished)

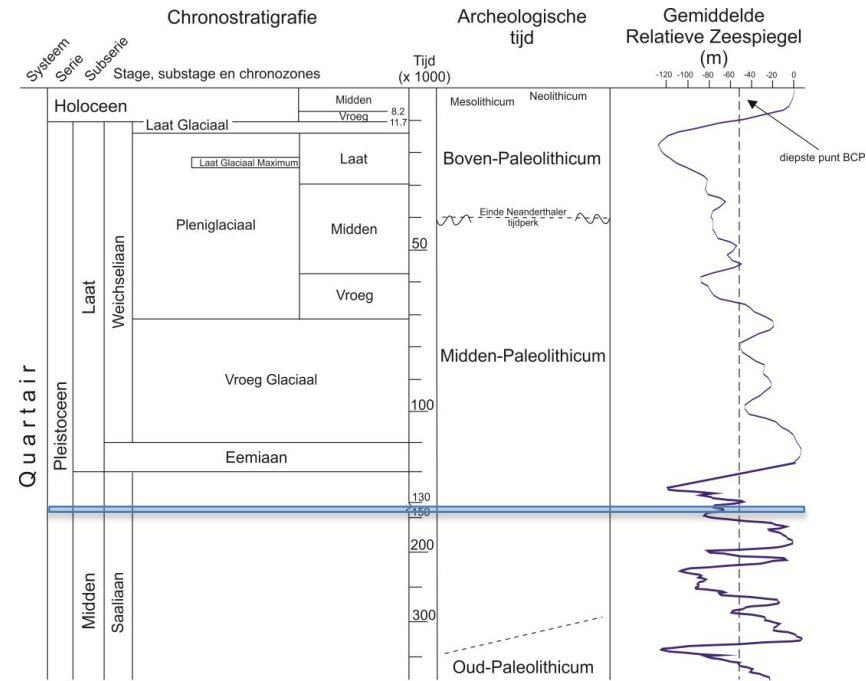
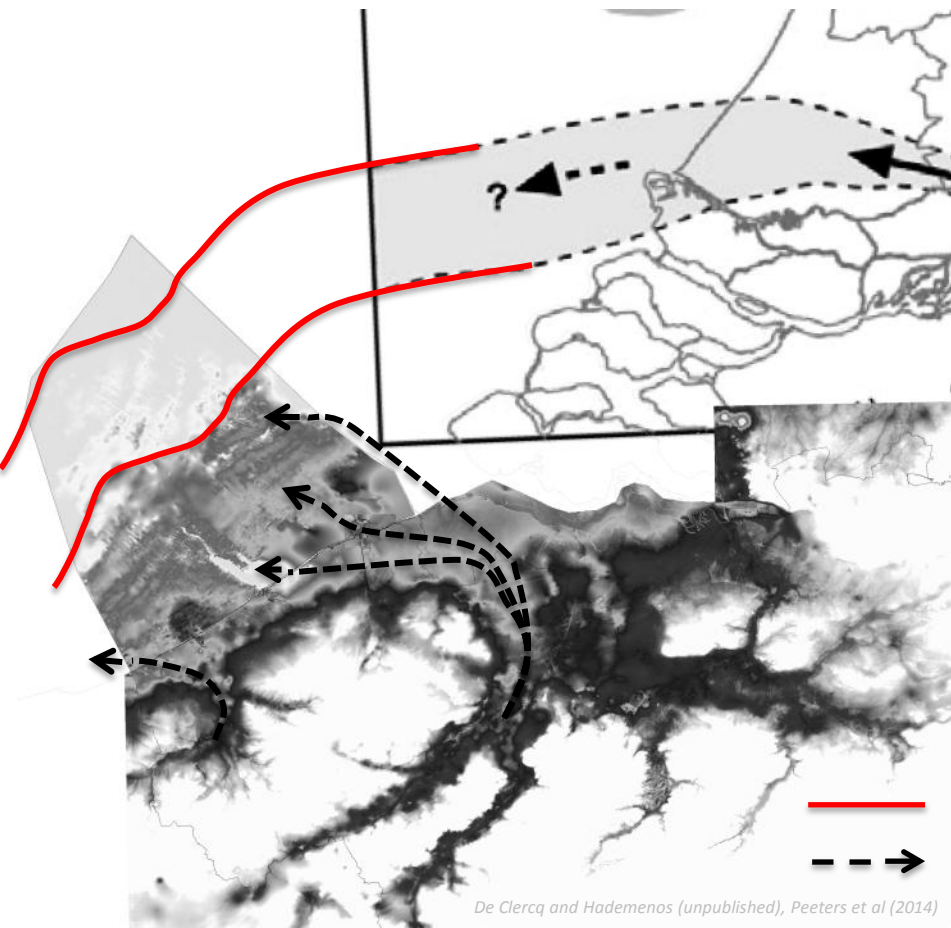
0 km 10 km

3. Hoe zijn deze landschappen tot stand gekomen?

Saale ijstijd: ca. 140.000 jaar geleden

meer loopt leeg

insnijding rivieren



aangepast naar Hijma et al (2012)

Insijding Scheldevallei, Oostendevallei, Zeebruggevallei(?), Thorntonvallei(?) en IJzervallei

Riviersedimenten bewaard gebleven?

— insijding Maas

- - -> vloeirichting Schelde en IJzer

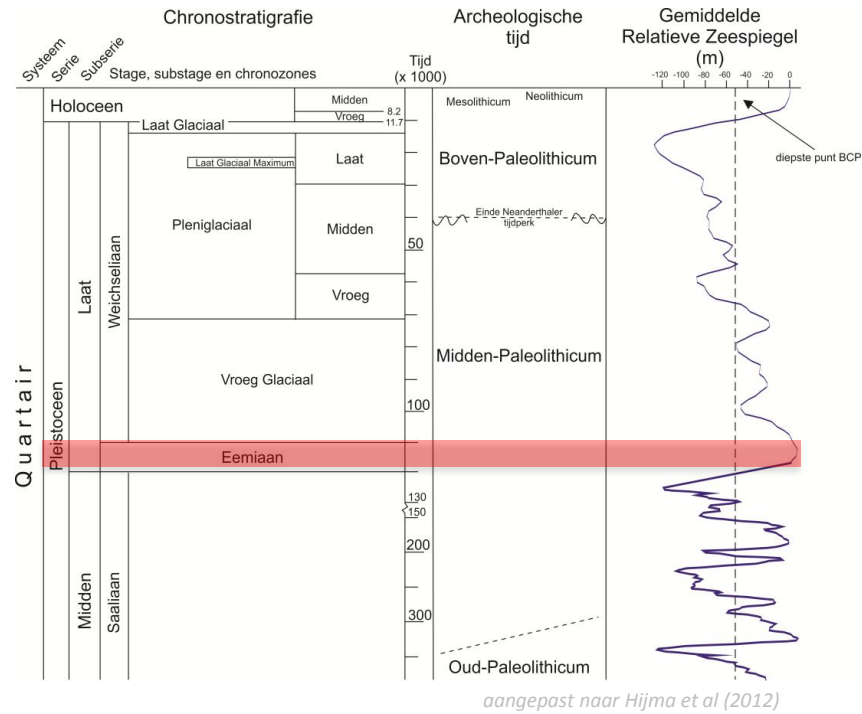


3. Hoe zijn deze landschappen tot stand gekomen?

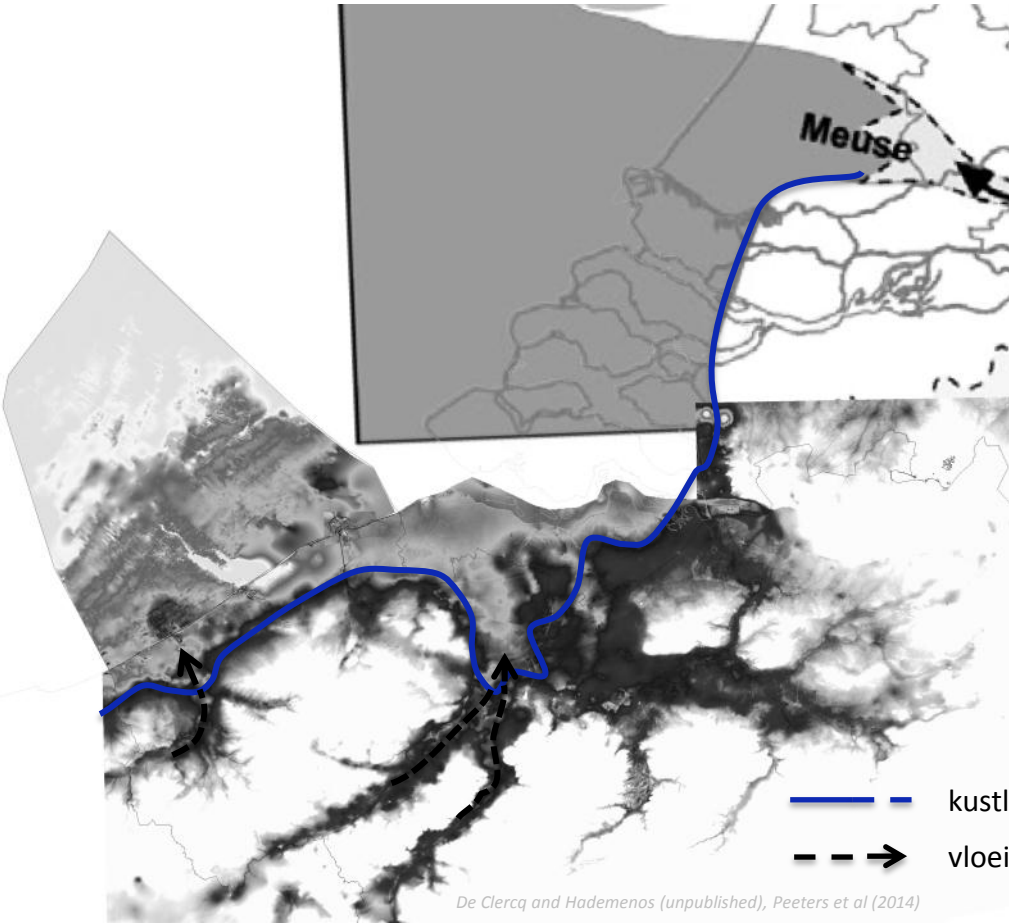
Eem tussenijstijd: ca. 120.000 jaar geleden

hoge zeespiegelstand

zee tot diep in de Vlaamse Vallei



Valleien vormen estuaria



- — — kustlijn
- - - → vloeirichting Schelde en IJzer

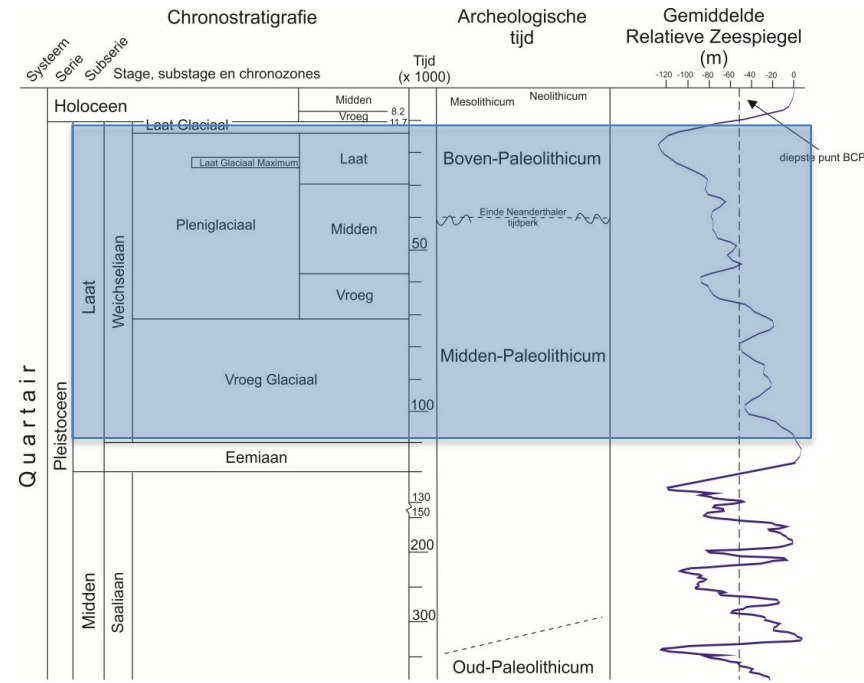
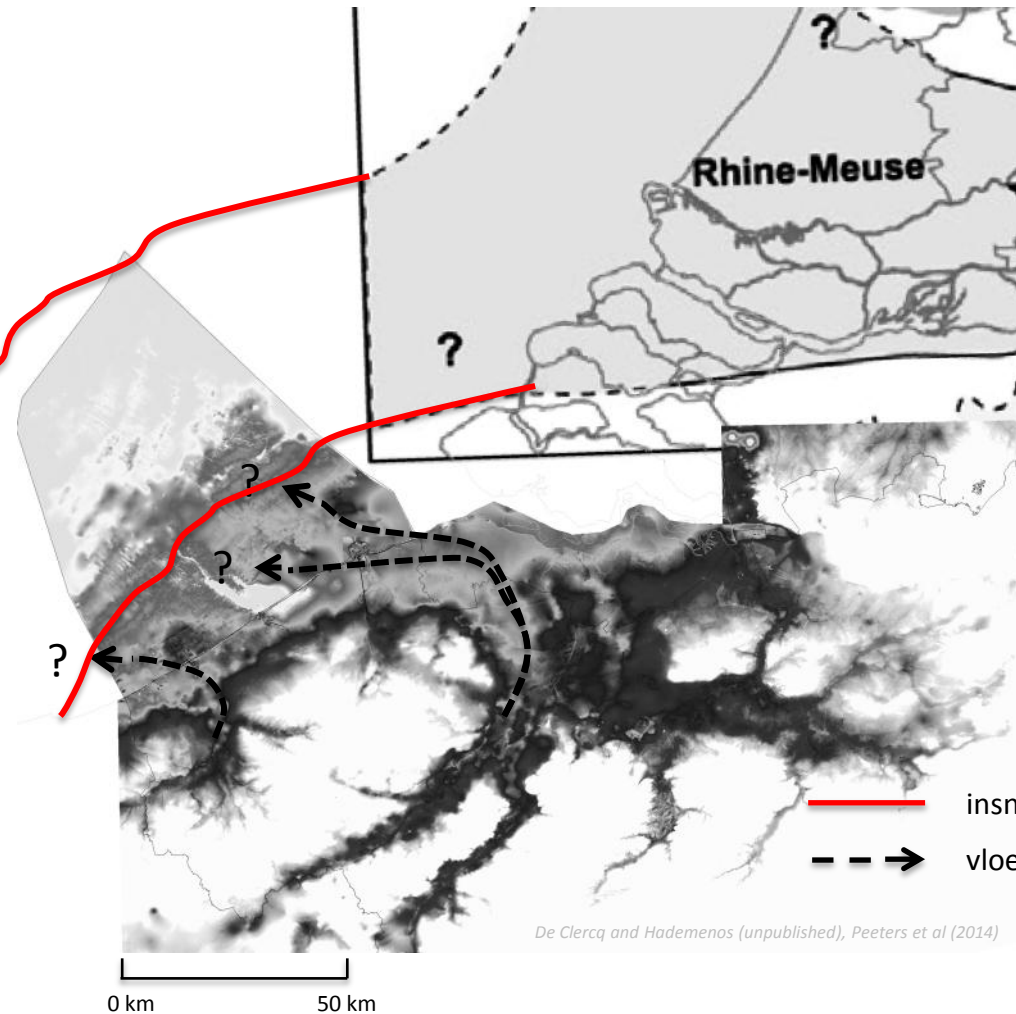
0 km 50 km

3. Hoe zijn deze landschappen tot stand gekomen?

Weichsel ijstijd: ca. 110.000-70.000 jaar geleden

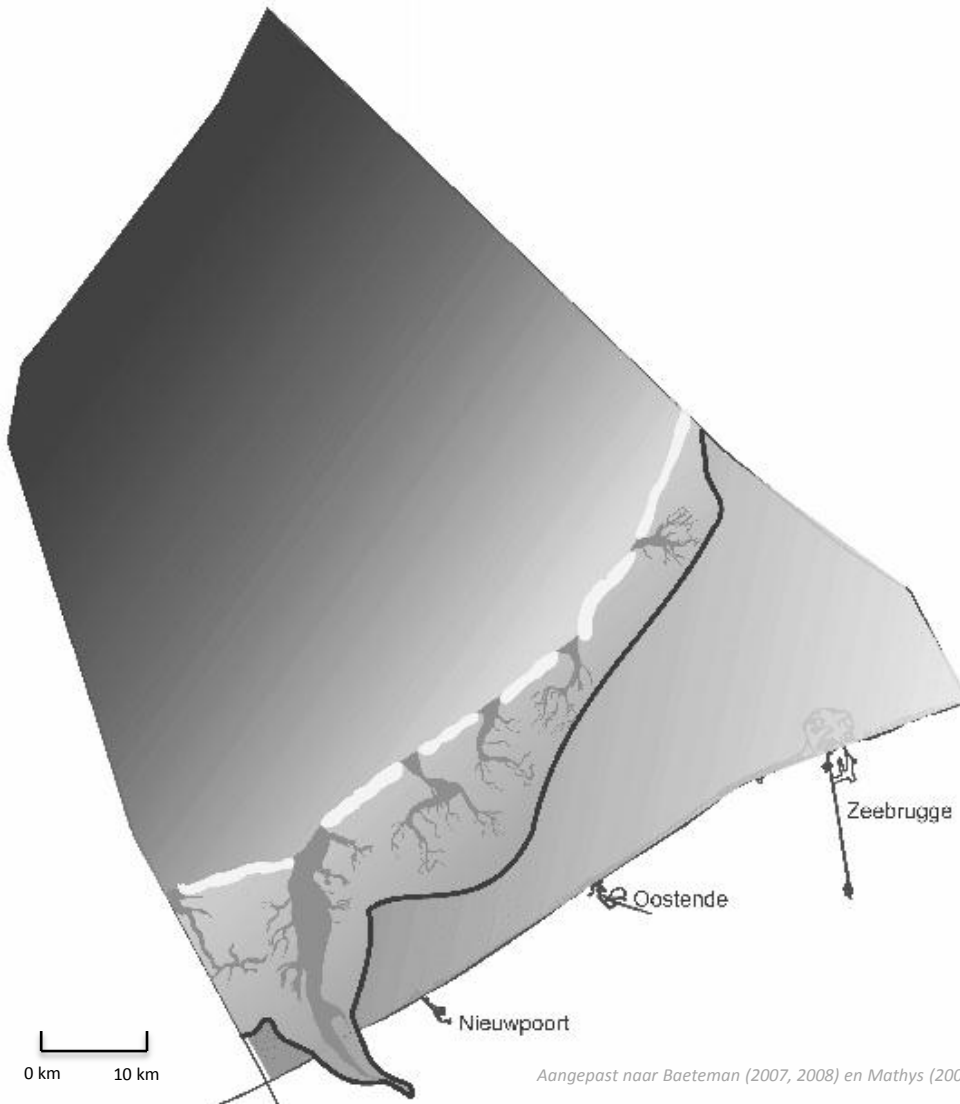
Noordzee droog

insnijding rivieren

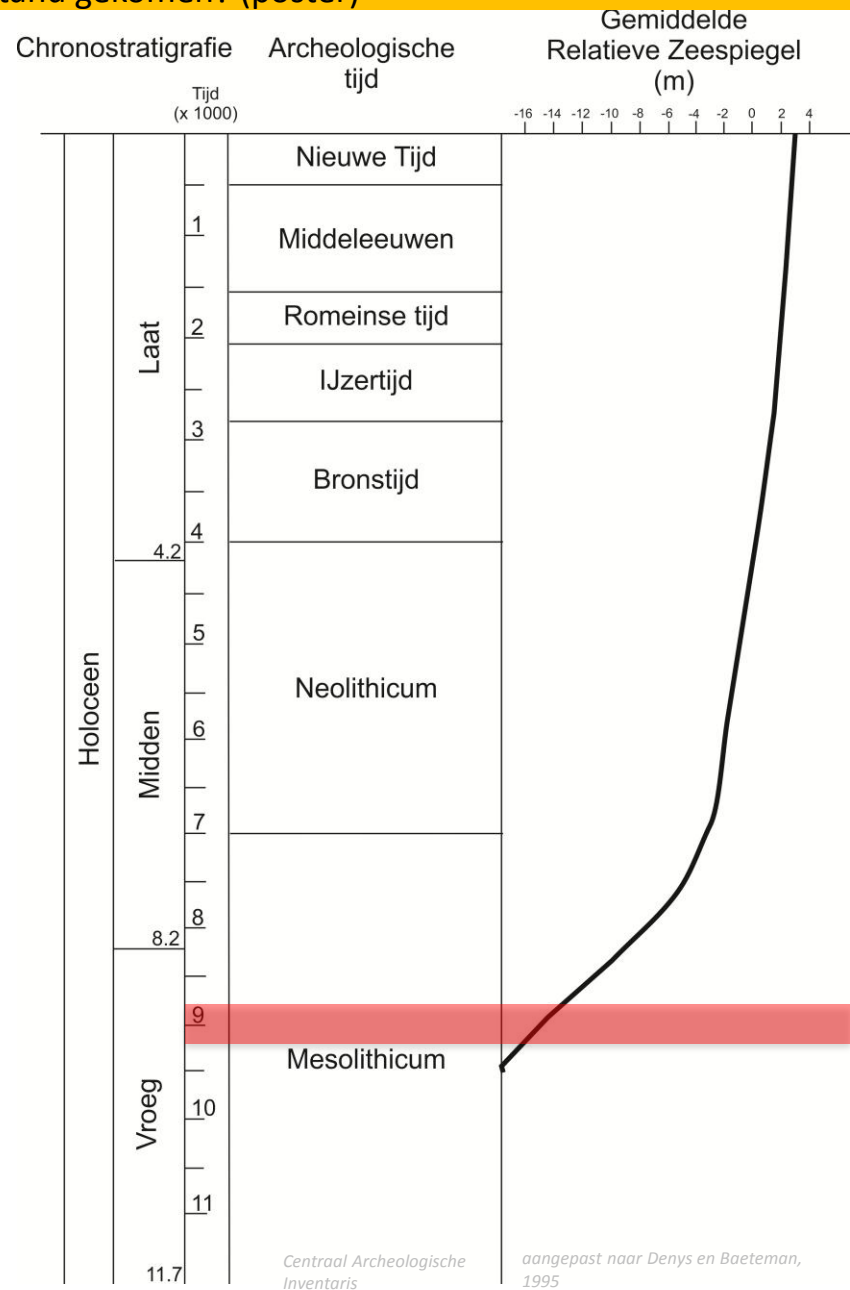


3. Hoe zijn deze landschappen tot stand gekomen? (poster)

Holoceen tussenijstijd: ca. 9.000 jaar geleden

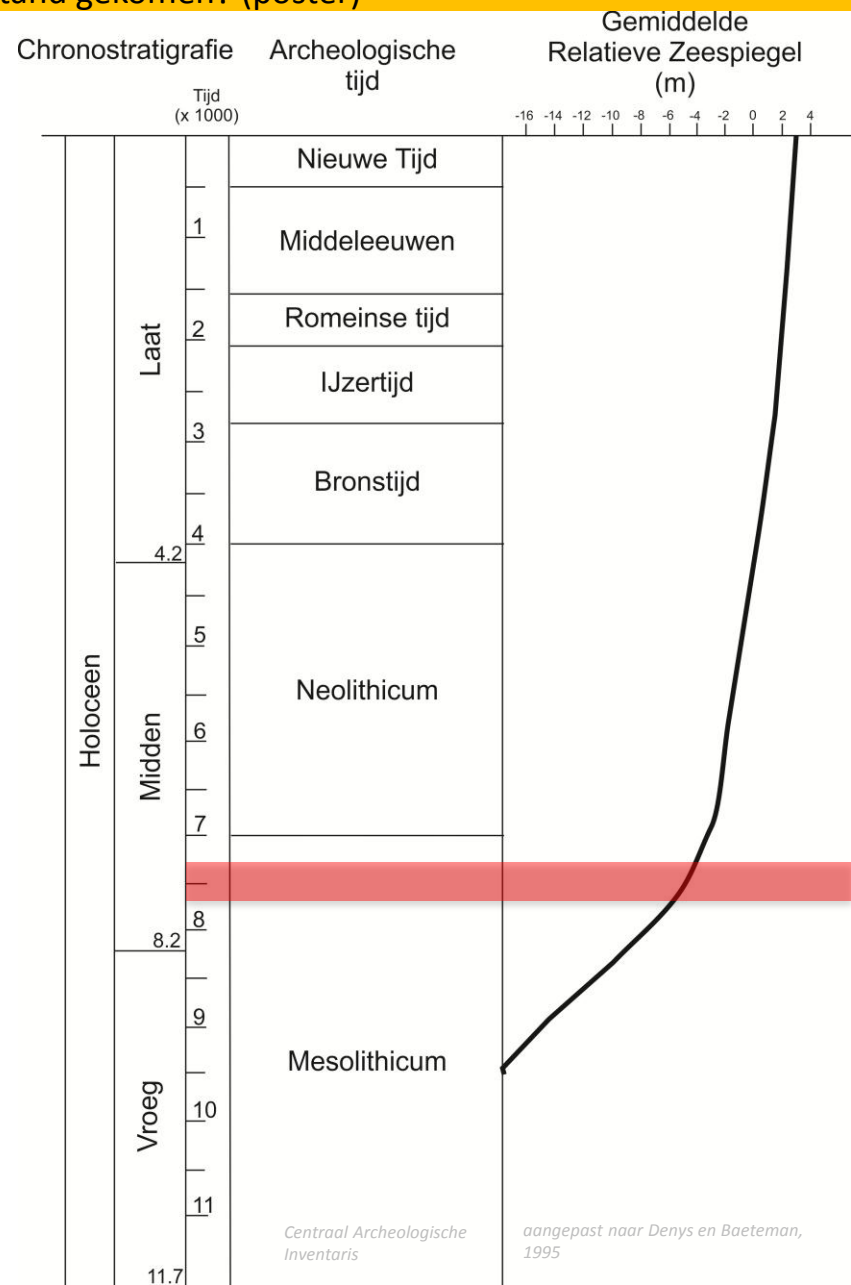
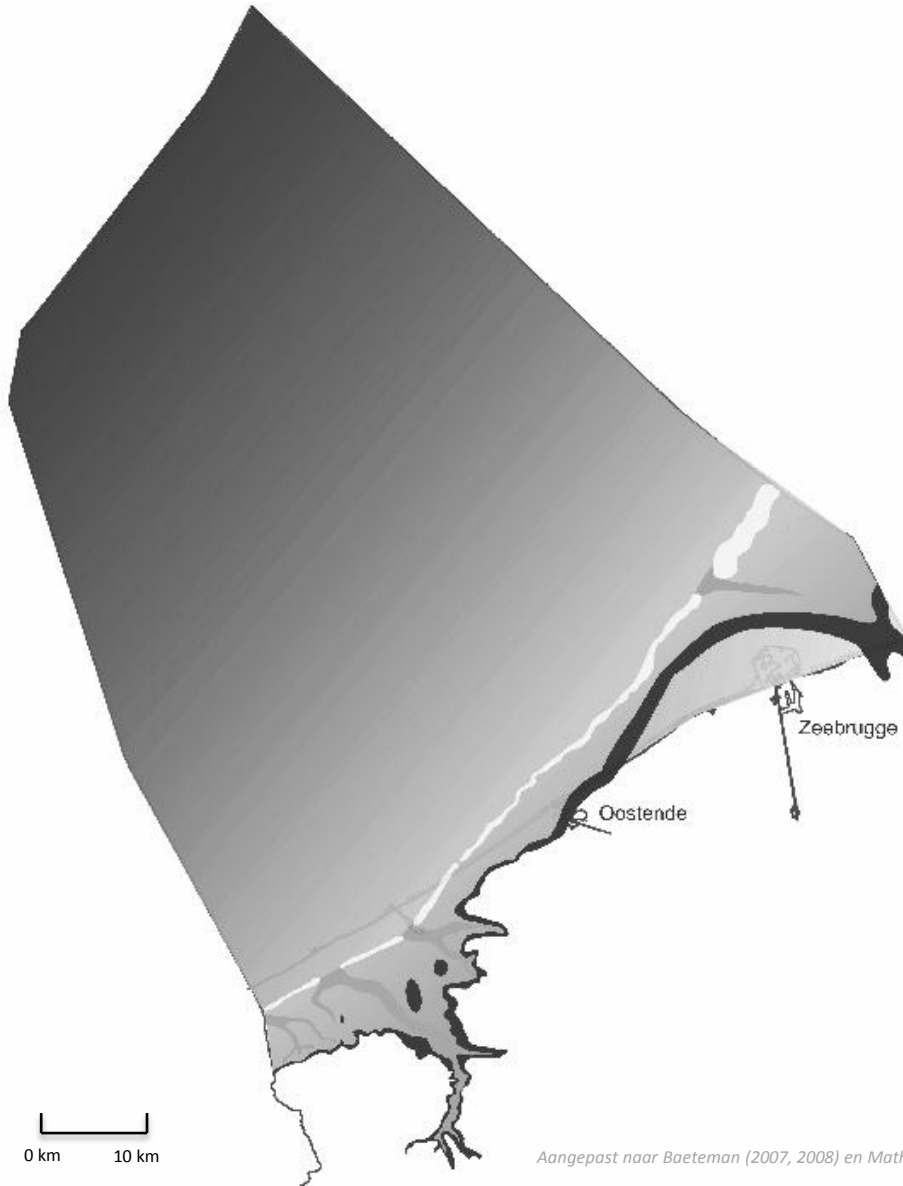


Aangepast naar Baeteman (2007, 2008) en Mathys (2009)



3. Hoe zijn deze landschappen tot stand gekomen? (poster)

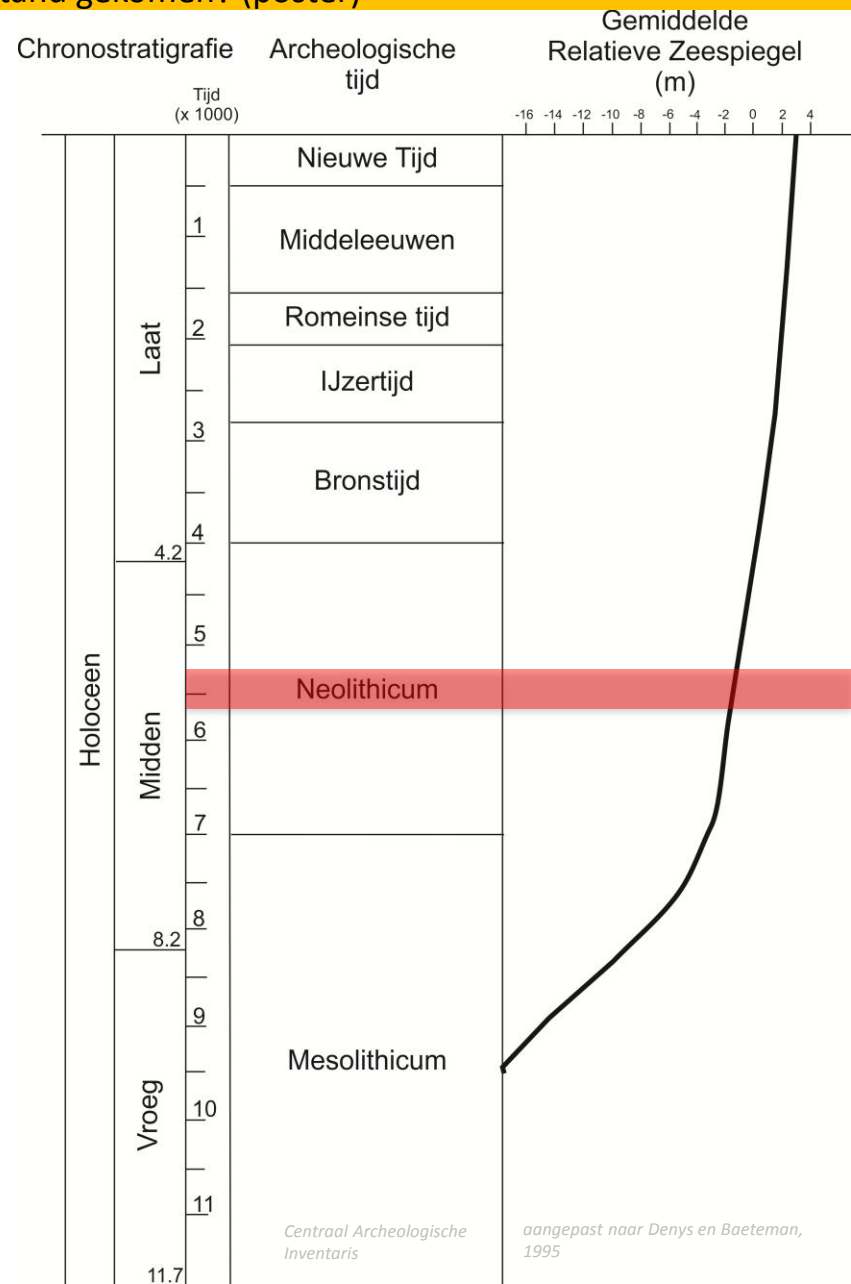
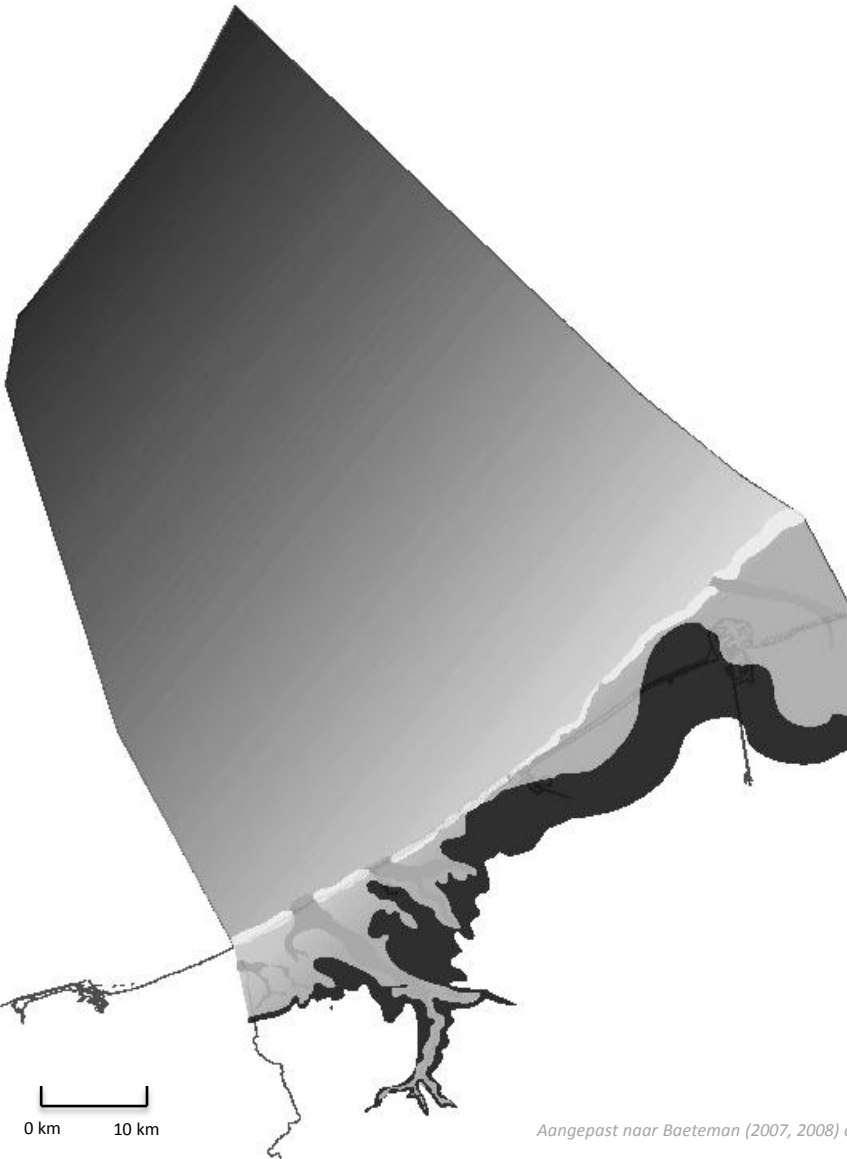
Holoceen tussenijstijd: ca. 7.500 jaar geleden



Aangepast naar Baeteman (2007, 2008) en Mathys (2009)

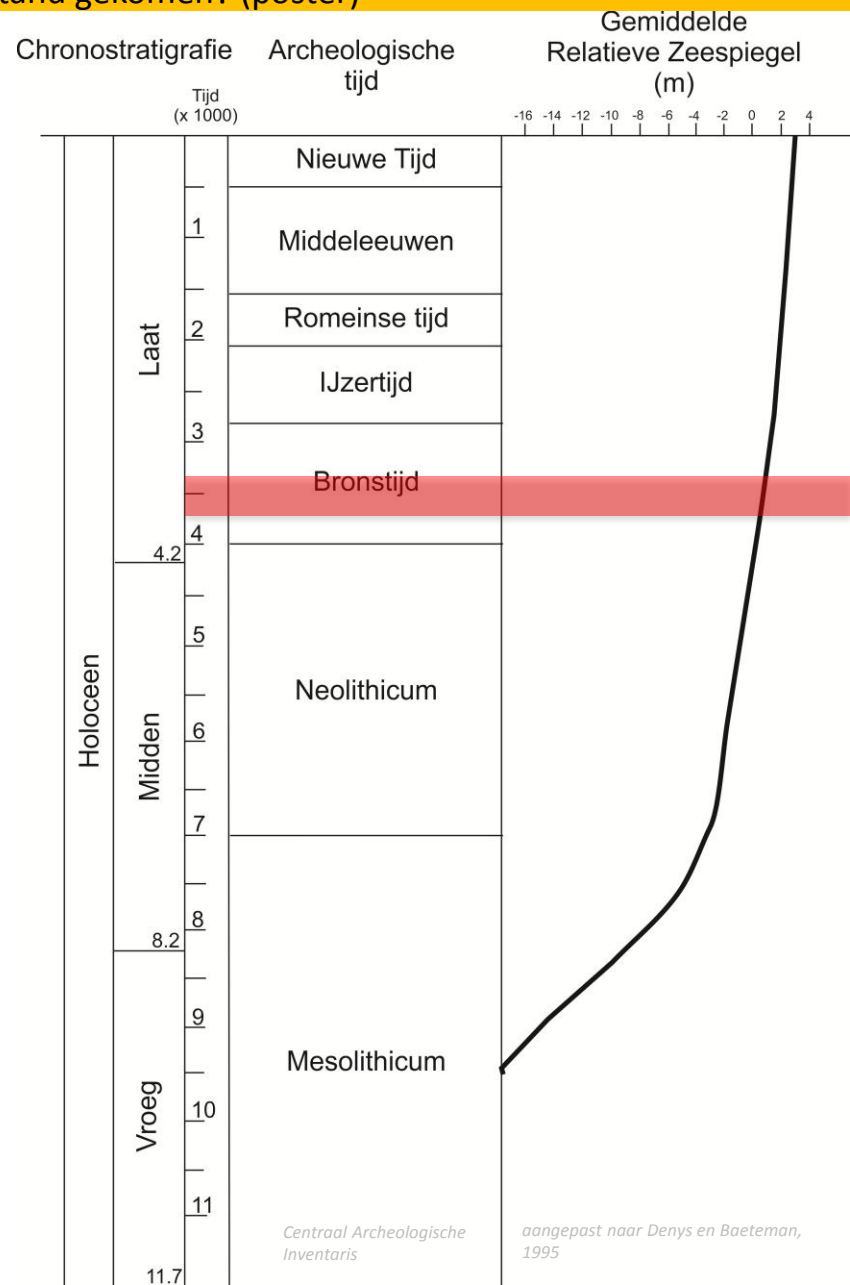
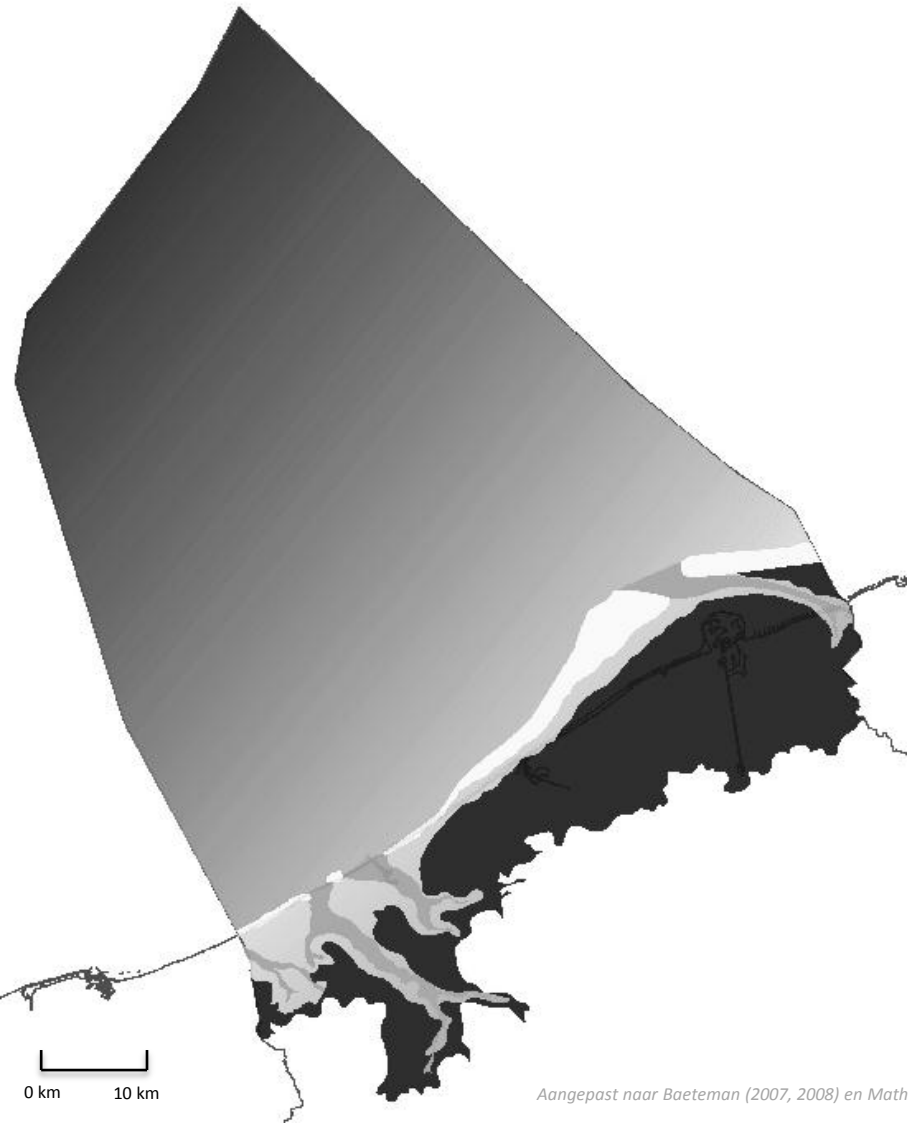
3. Hoe zijn deze landschappen tot stand gekomen? (poster)

Holoceen tussenijstijd: ca. 5.500 jaar geleden



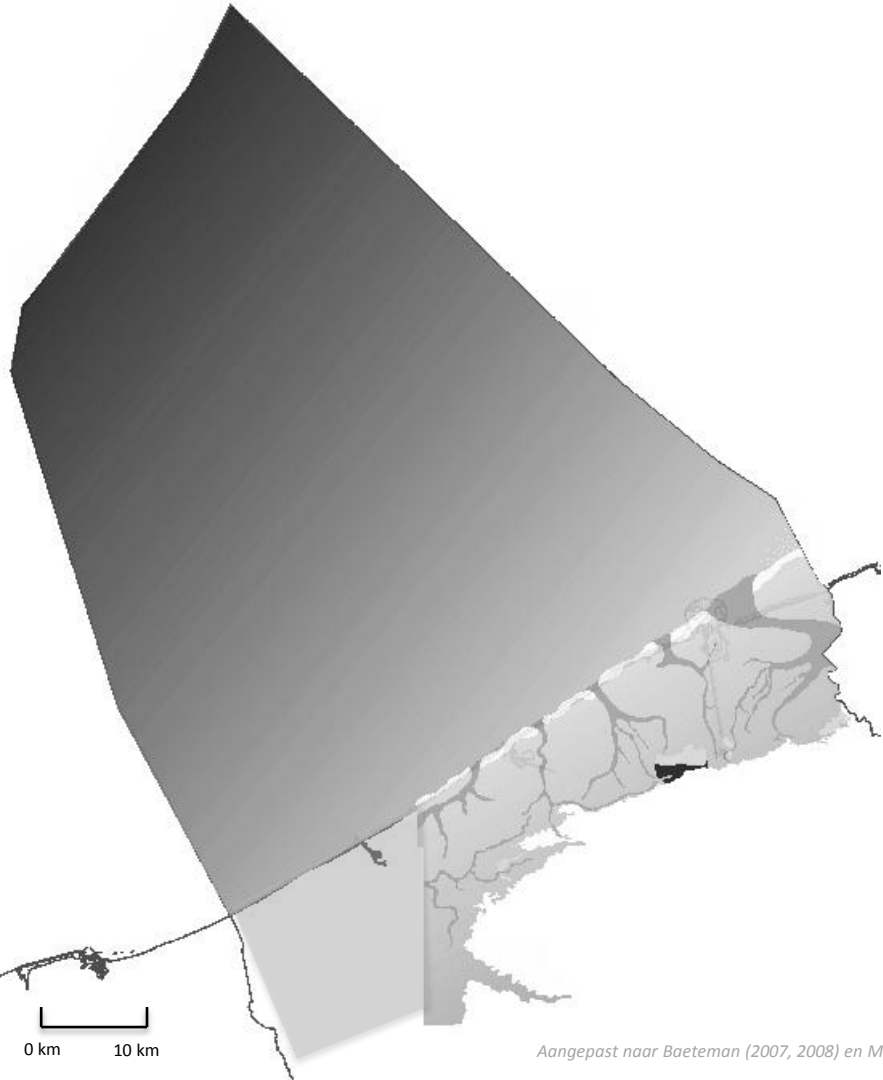
3. Hoe zijn deze landschappen tot stand gekomen? (poster)

Holoceen tussenijstijd: ca. 3.500 jaar geleden

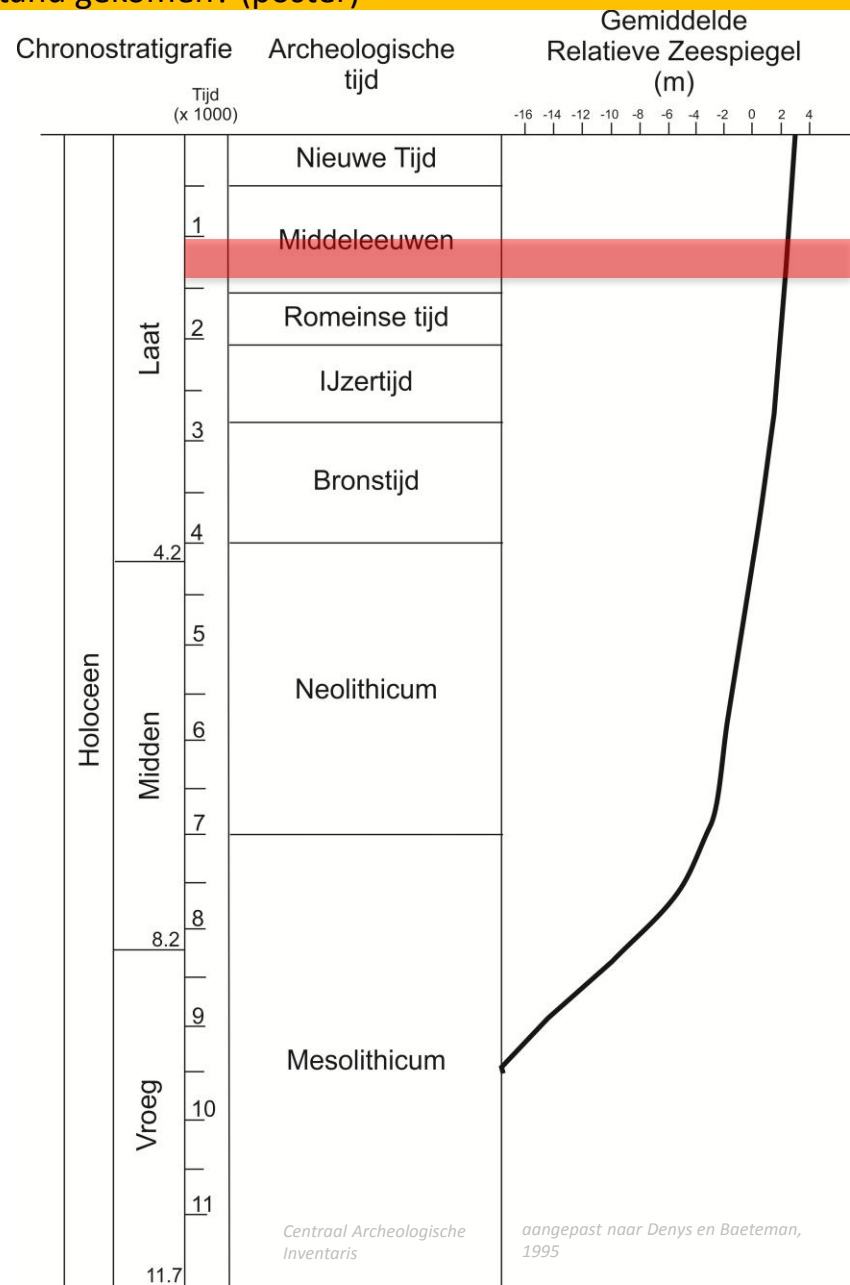


3. Hoe zijn deze landschappen tot stand gekomen? (poster)

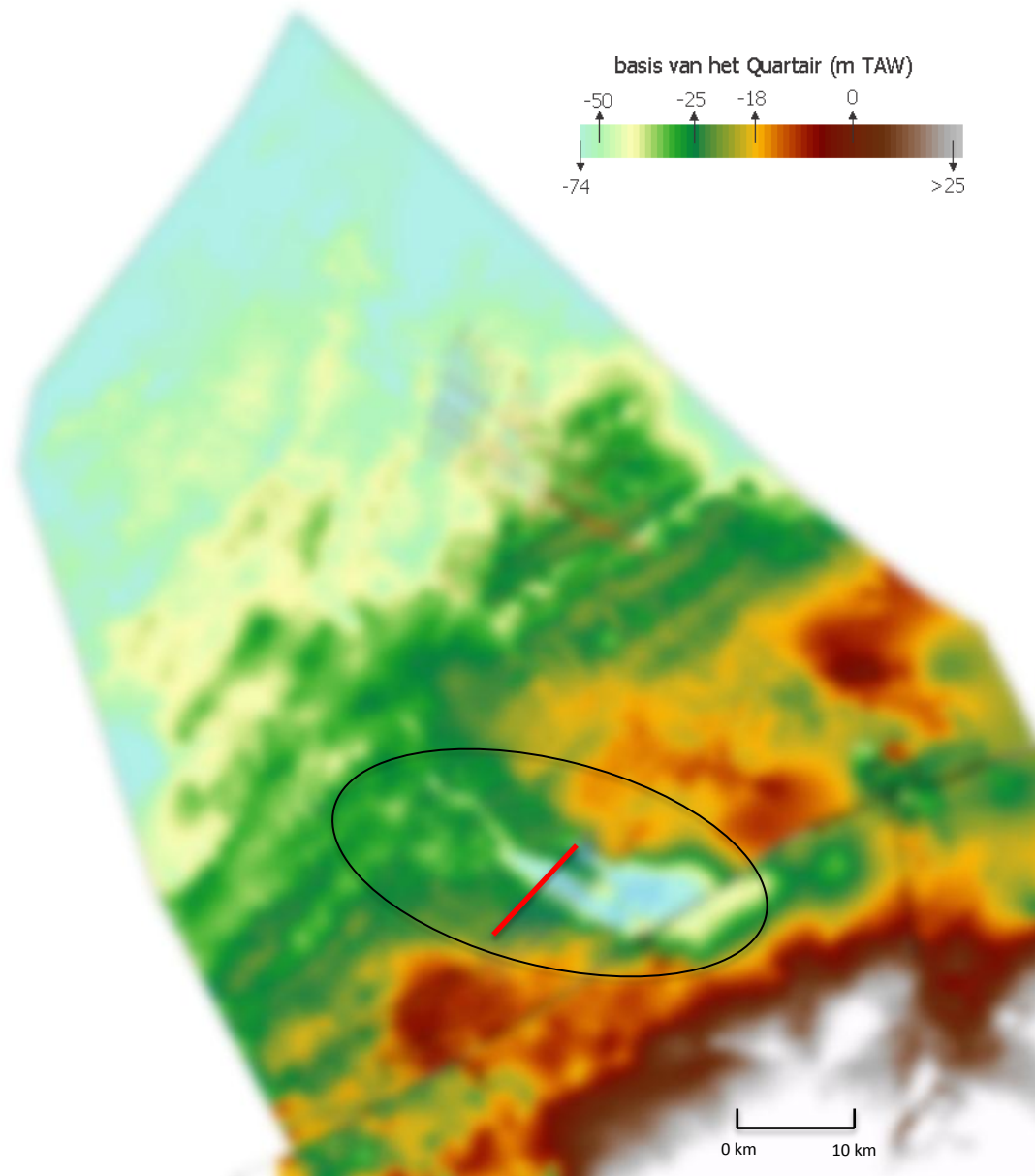
Holoceen tussenijstijd: 8^e-9^e eeuw n.C



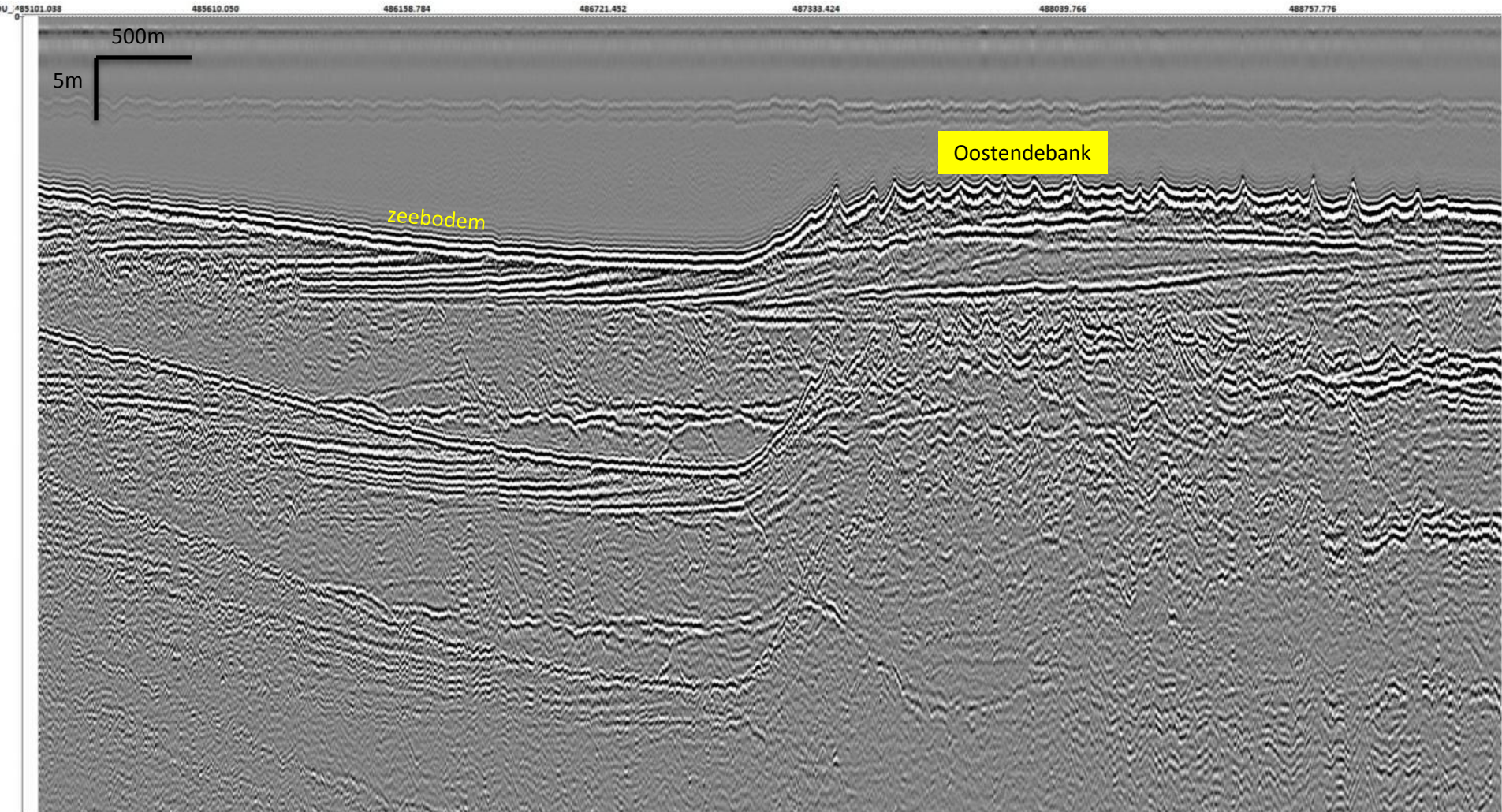
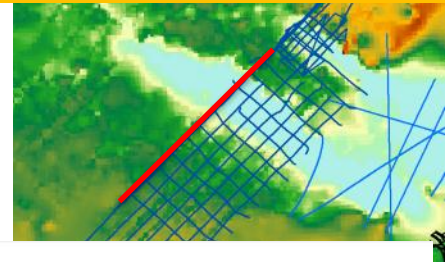
Aangepast naar Baeteman (2007, 2008) en Mathys (2009)



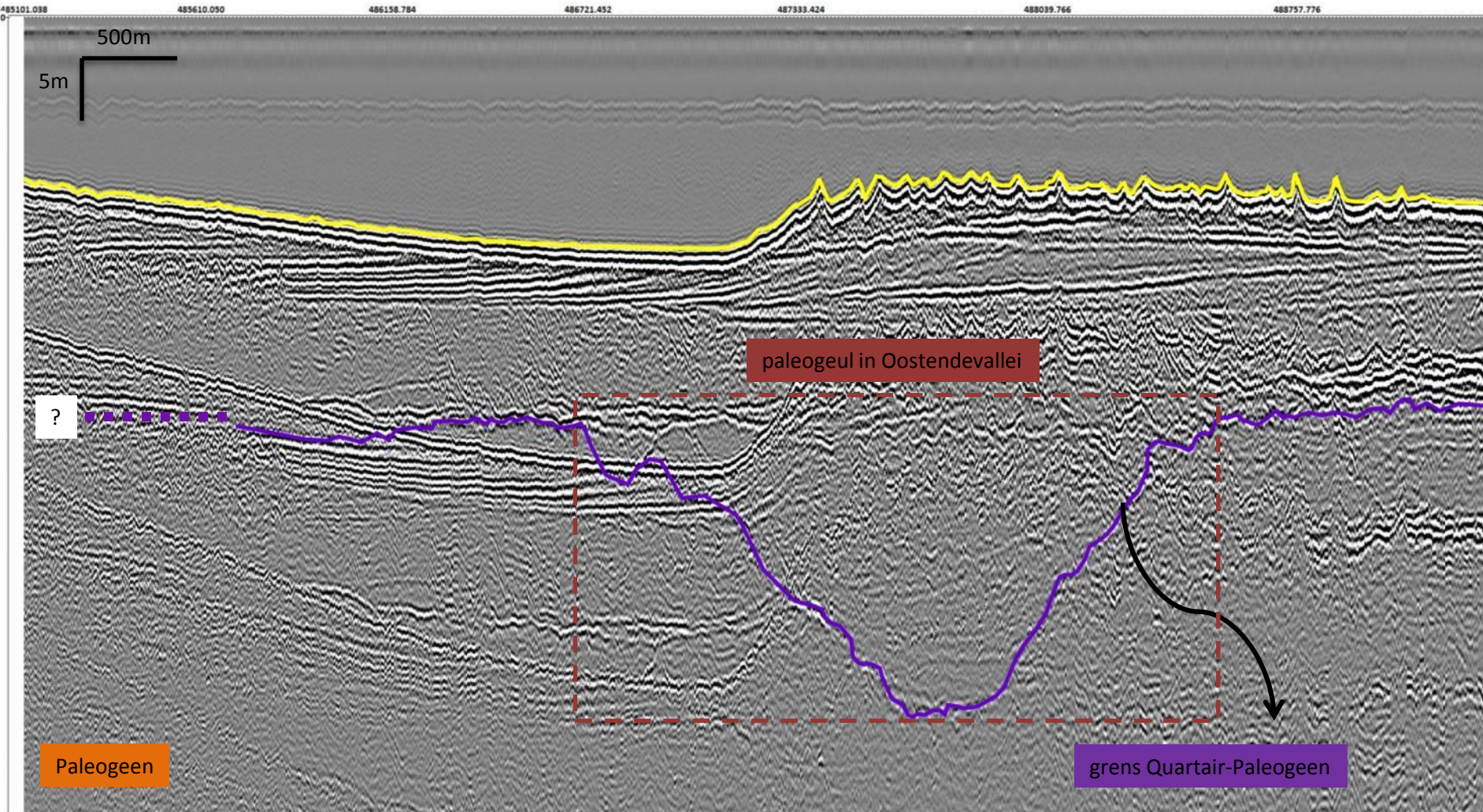
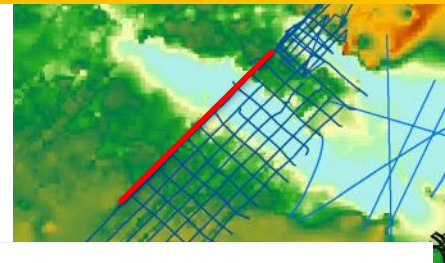
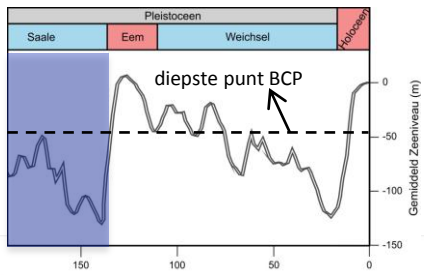
4. Hoe vertaalt dit zich in de data? → Oostendevallei



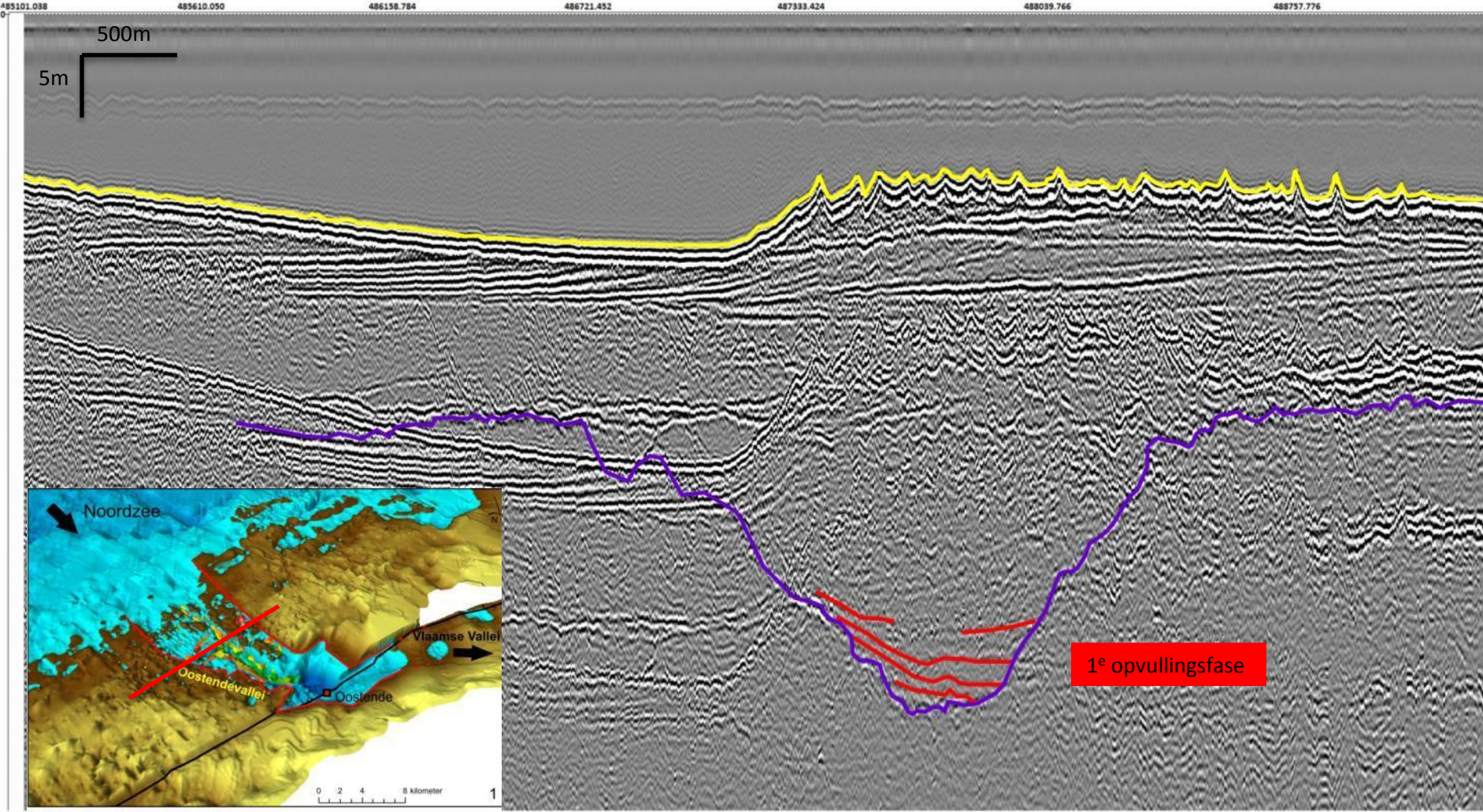
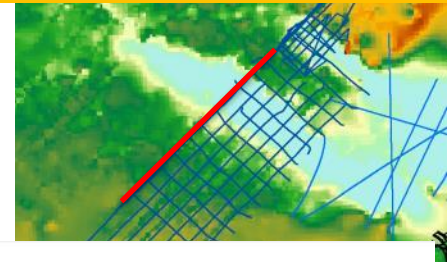
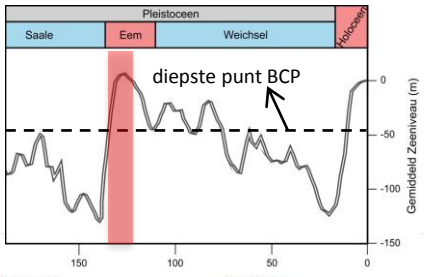
4. Hoe vertaalt dit zich in de data? → Oostendevallei



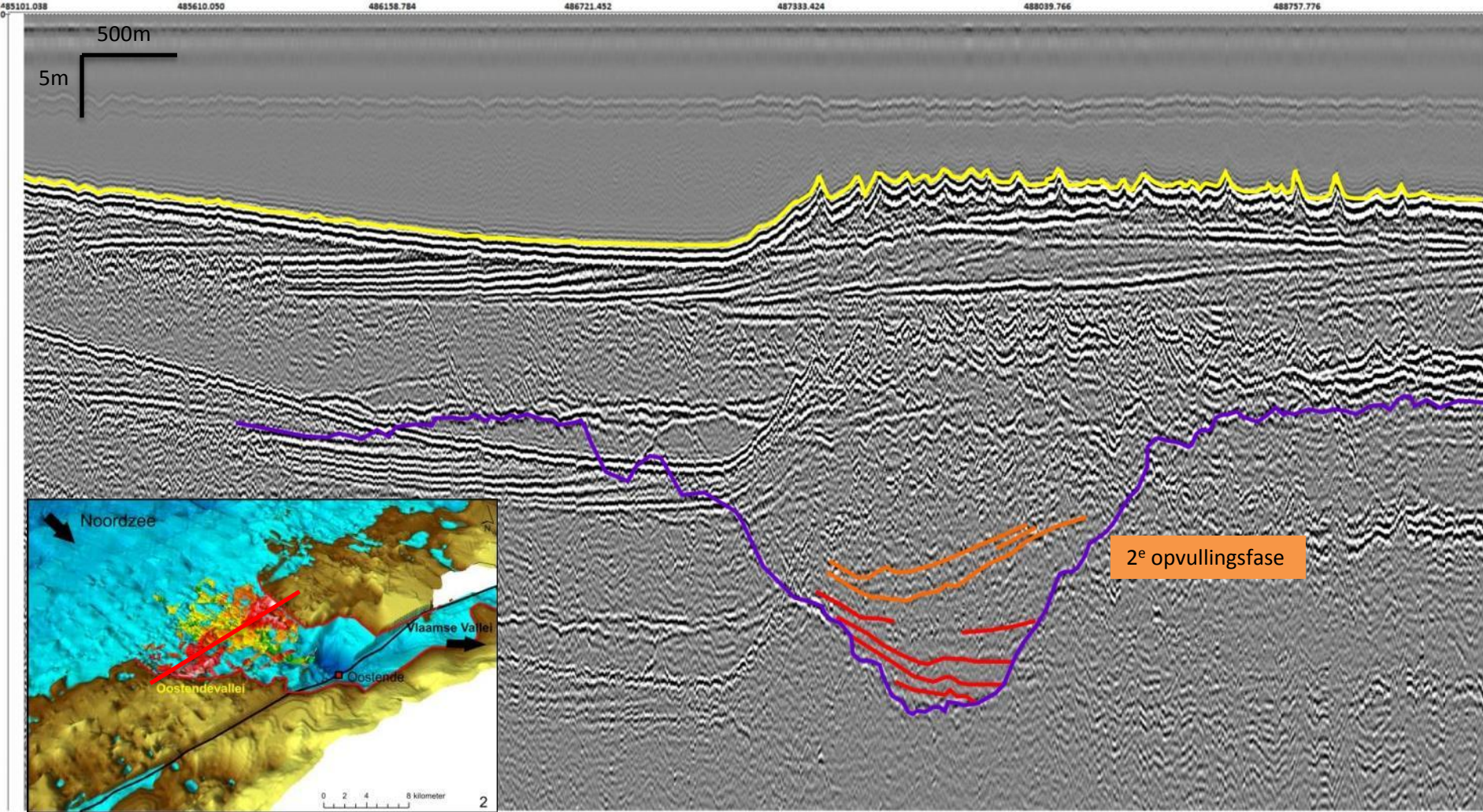
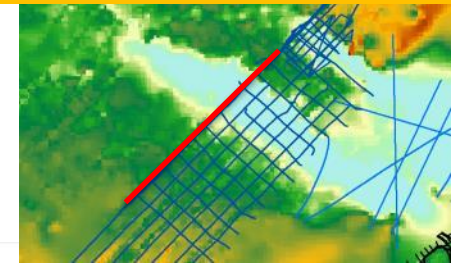
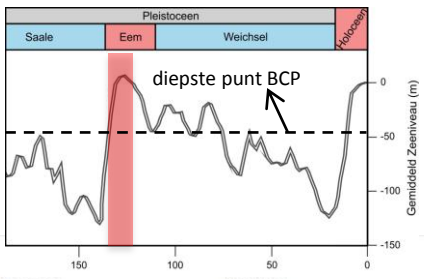
4. Hoe vertaalt dit zich in de data? → Oostendevallei



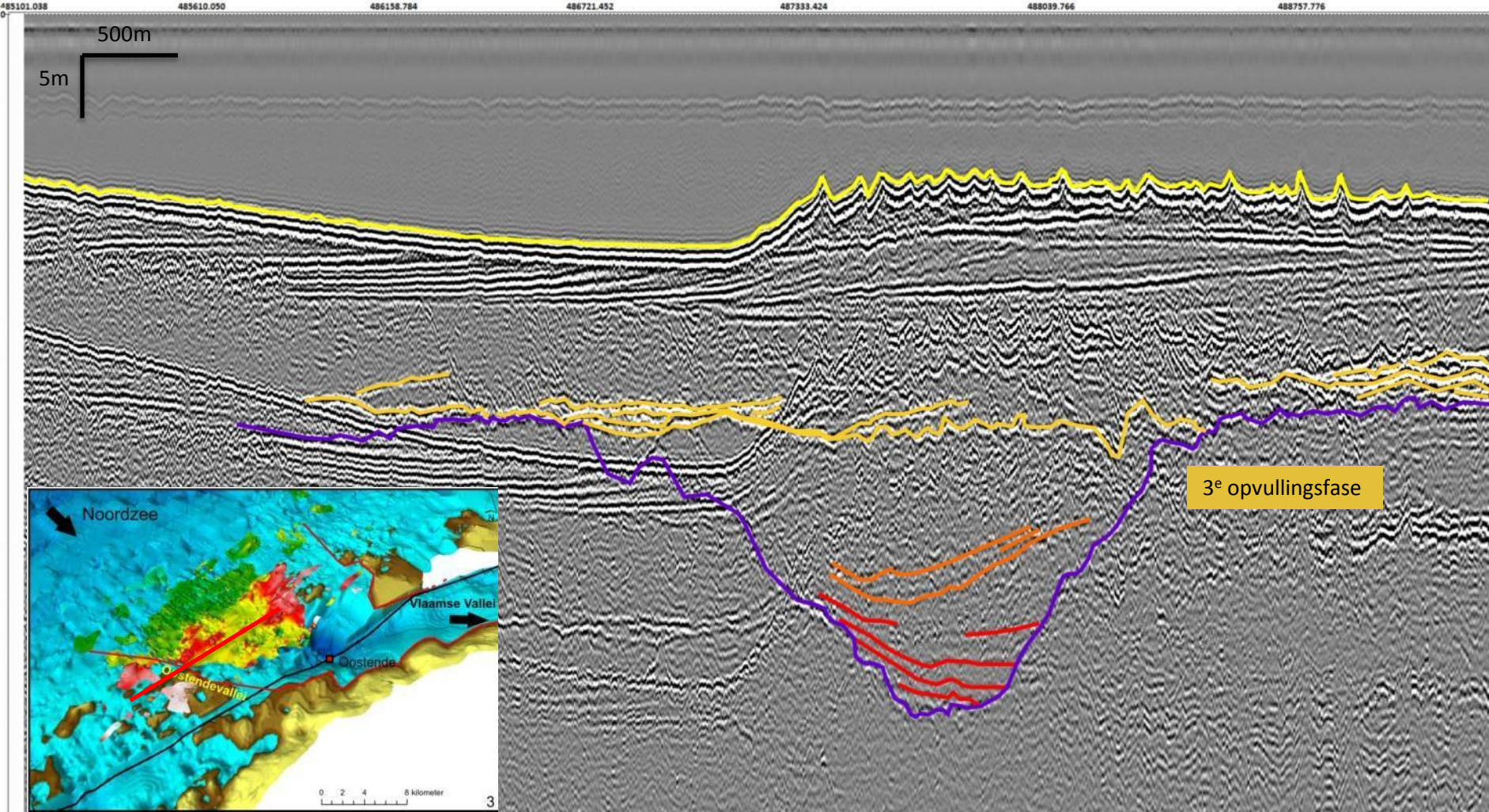
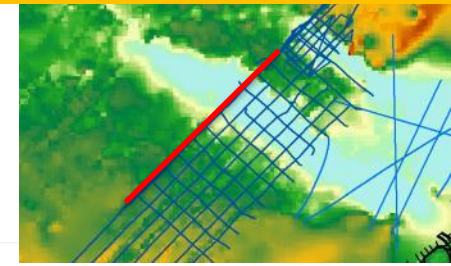
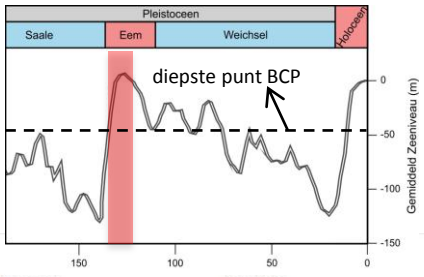
4. Hoe vertaalt dit zich in de data? → Oostendevallei



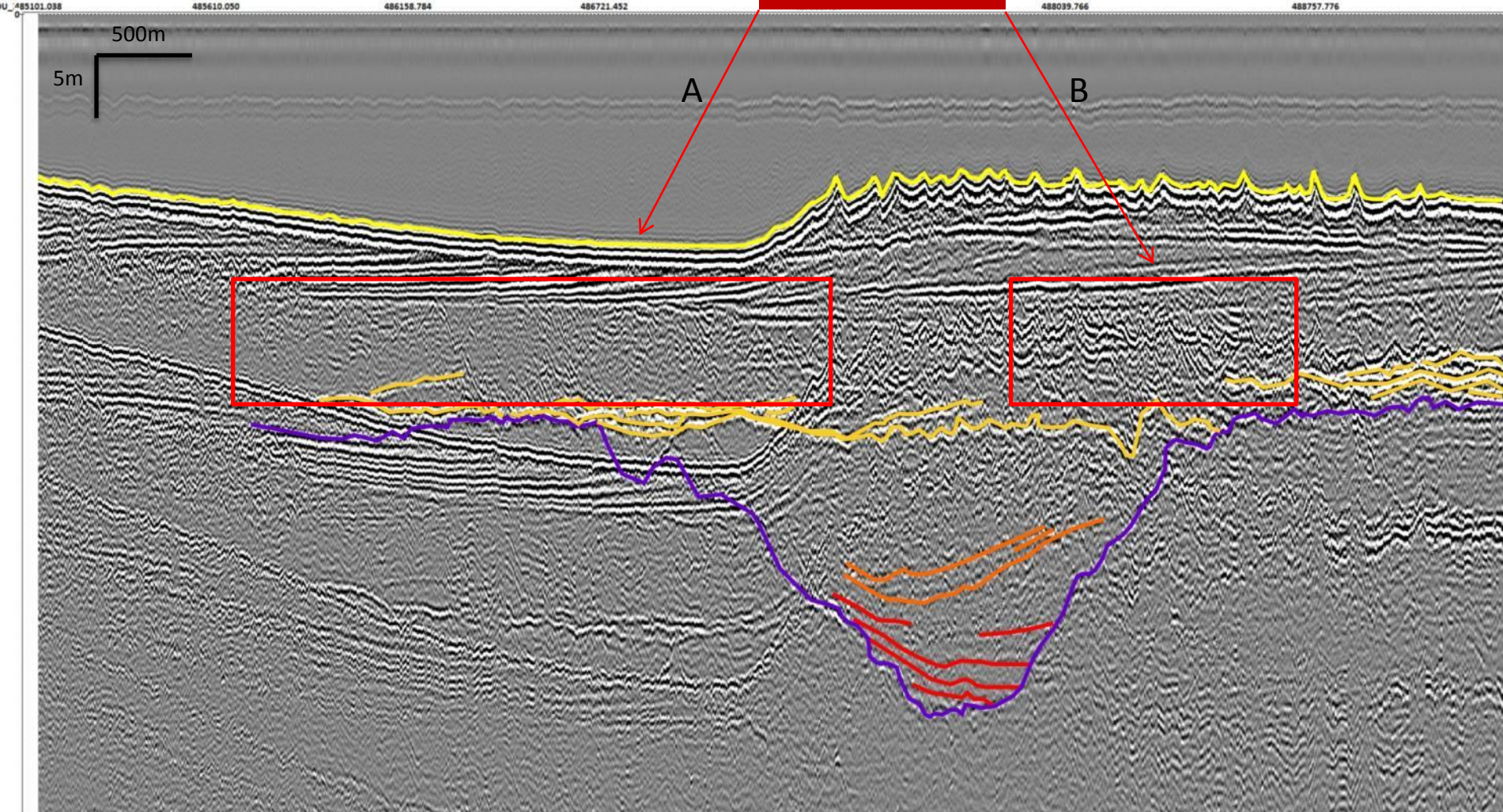
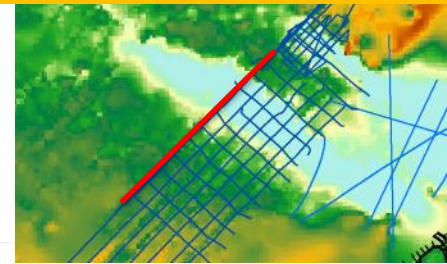
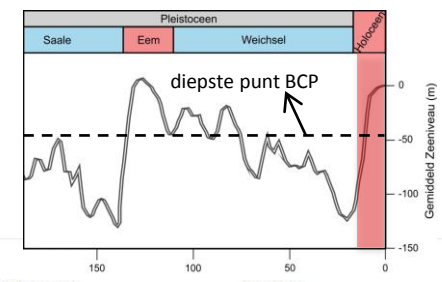
4. Hoe vertaalt dit zich in de data? → Oostendevallei



4. Hoe vertaalt dit zich in de data? → Oostendevallei



4. Hoe vertaalt dit zich in de data? → Oostendevallei



Waddenzee



slikken



platen



prielen



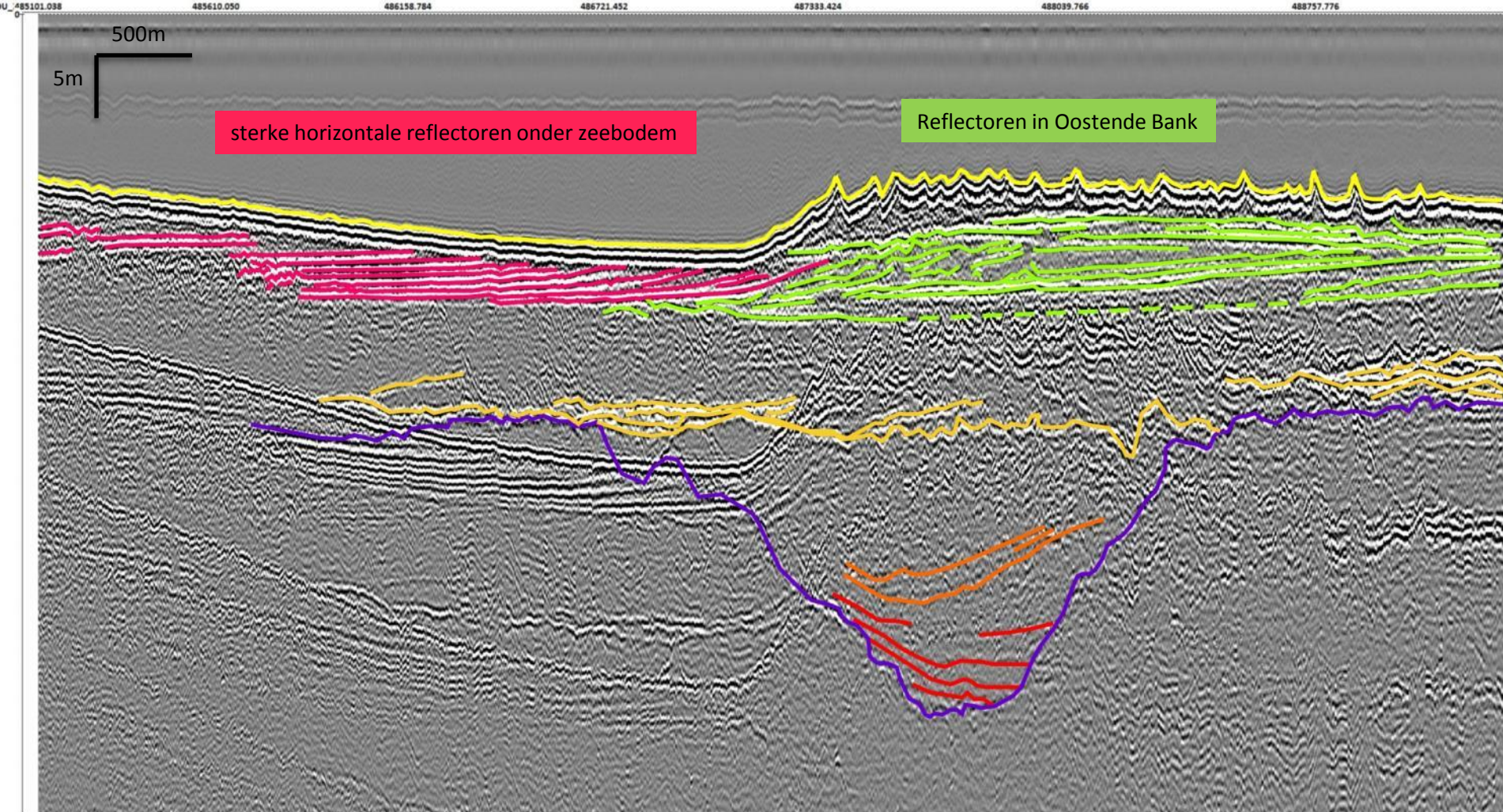
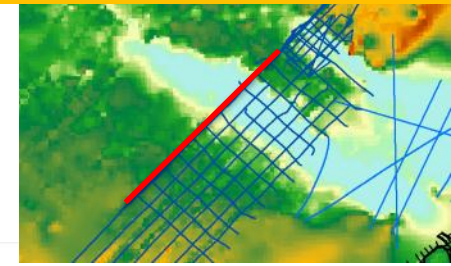
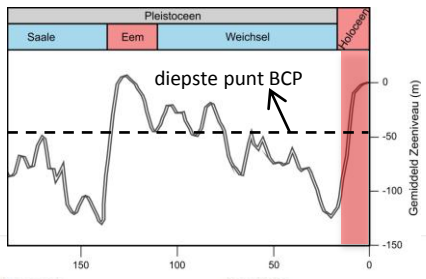
geulen



schorre



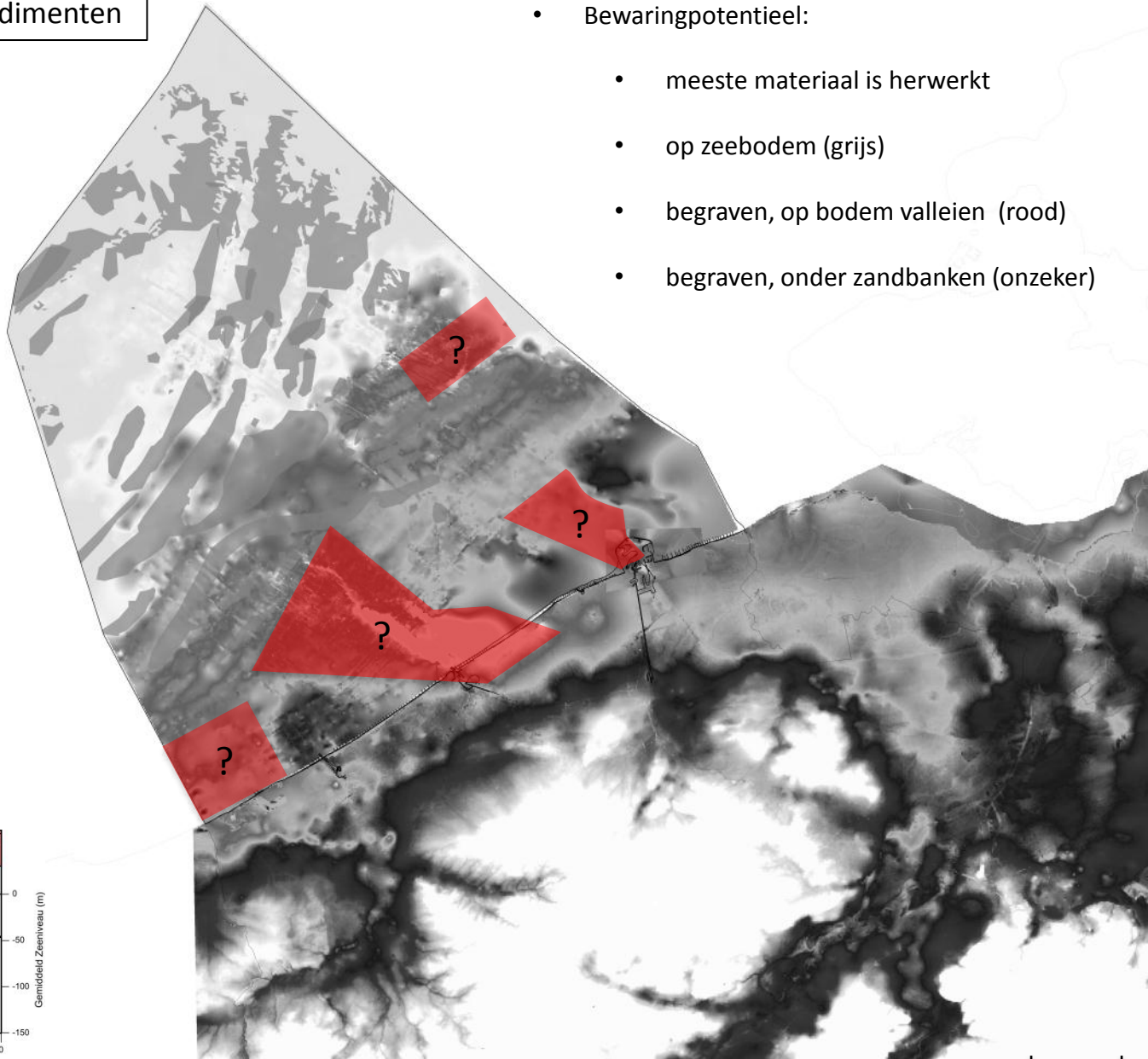
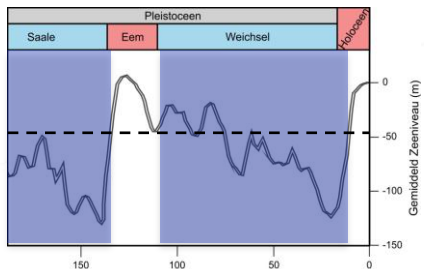
4. Hoe vertaalt dit zich in de data? → Oostendevallei



5. Wat is het archeologisch potentieel van deze resterende afzettingen?

fluviale sedimenten

- Bewaringspotentieel:
 - meeste materiaal is herwerkt
 - op zeebodem (grijs)
 - begraven, op bodem valleien (rood)
 - begraven, onder zandbanken (onzeker)

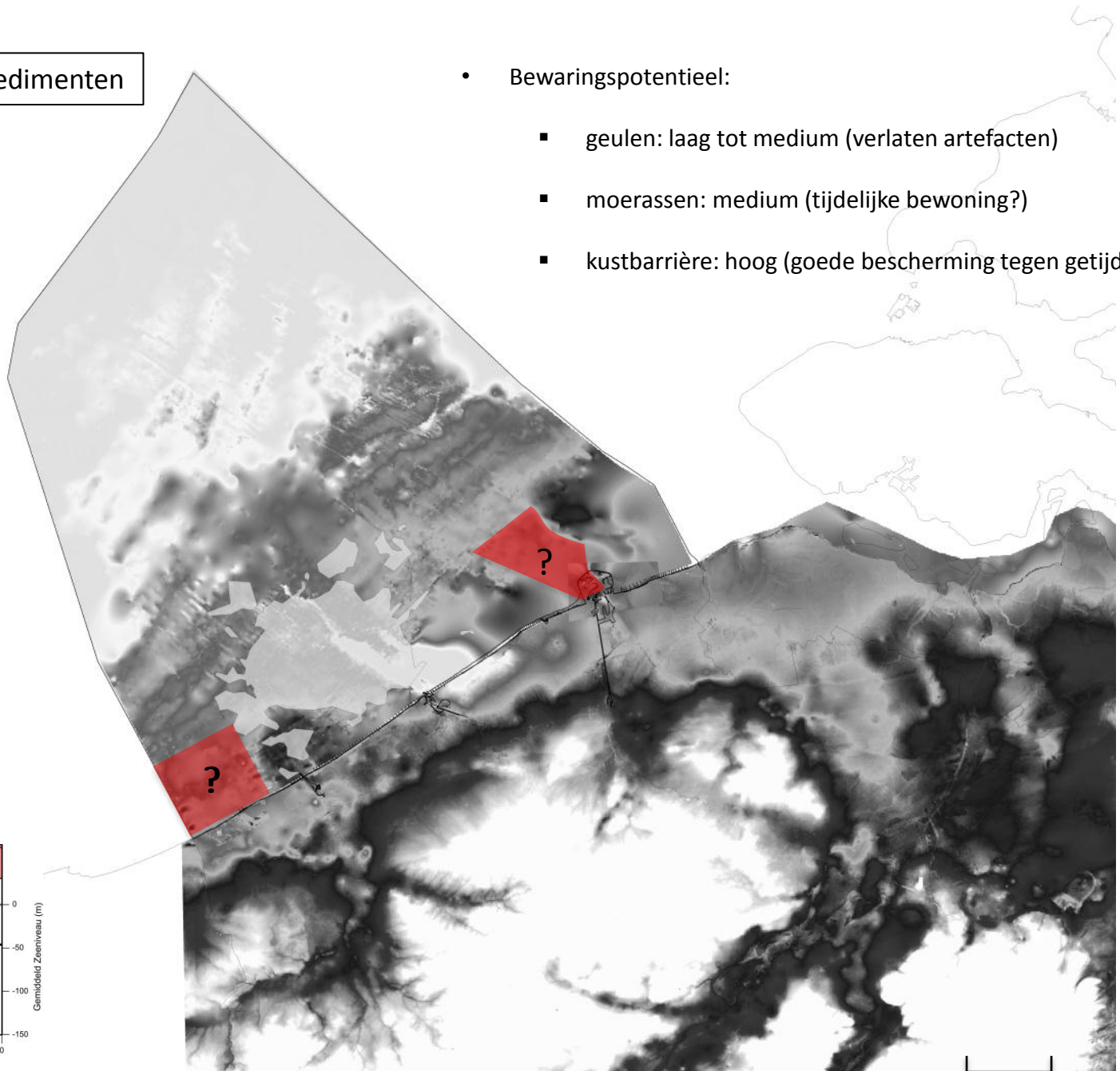
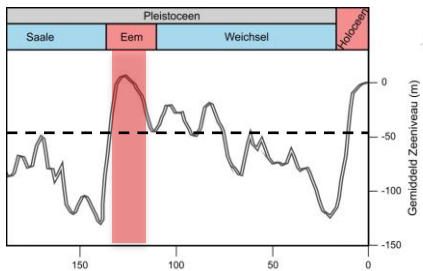


0 km 10 km

5. Wat is het archeologisch potentieel van deze resterende afzettingen?

estuariene sedimenten

- Bewaringspotentieel:
 - geulen: laag tot medium (verlaten artefacten)
 - moerassen: medium (tijdelijke bewoning?)
 - kustbarrière: hoog (goede bescherming tegen getijden)

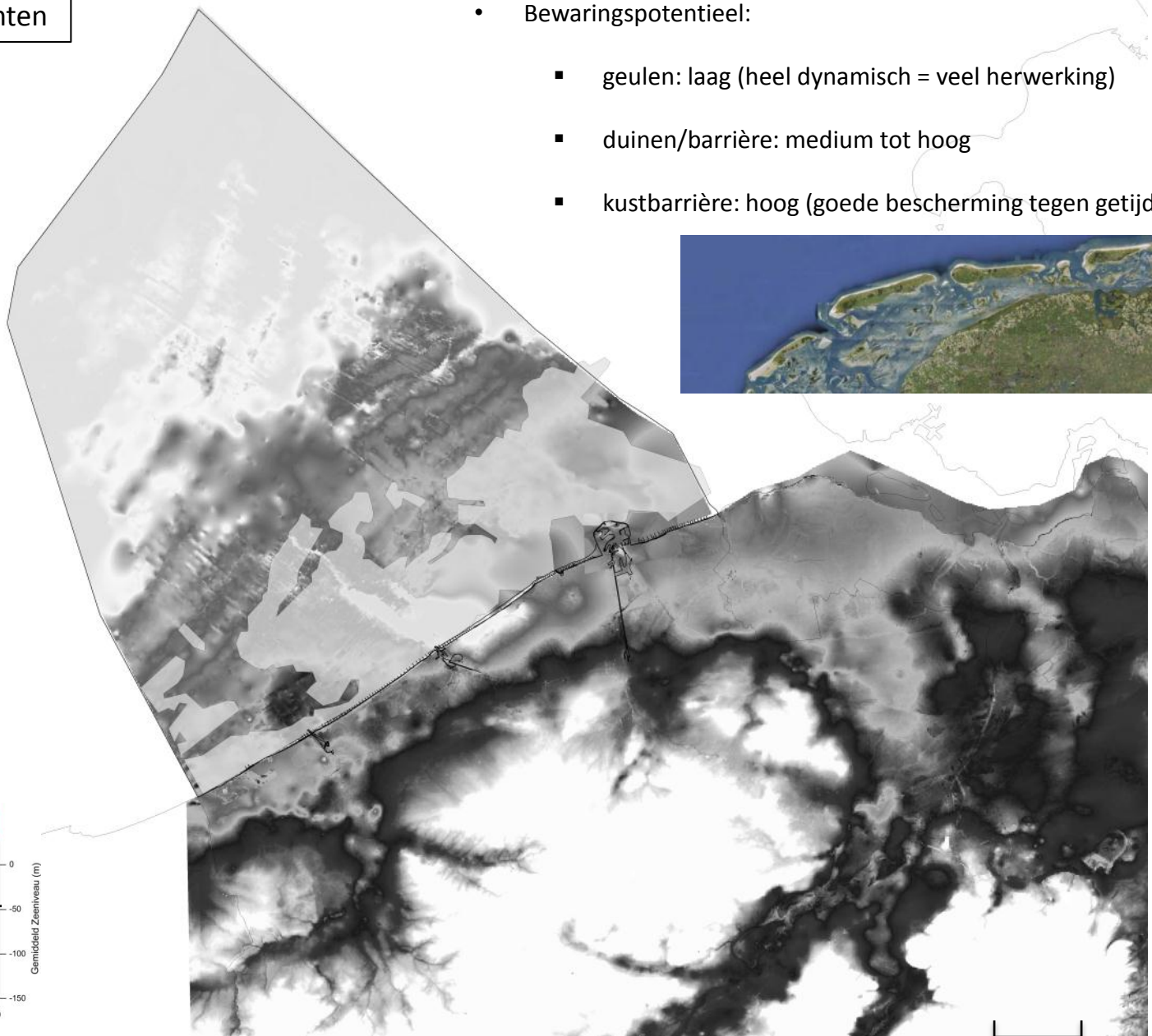
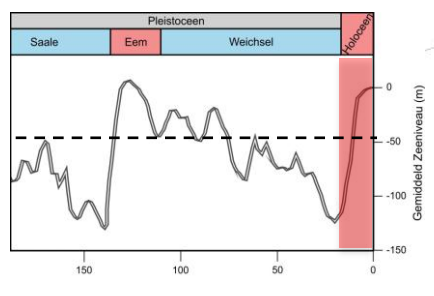


0 km 10 km

5. Wat is het archeologisch potentieel van deze resterende afzettingen?

wad sedimenten

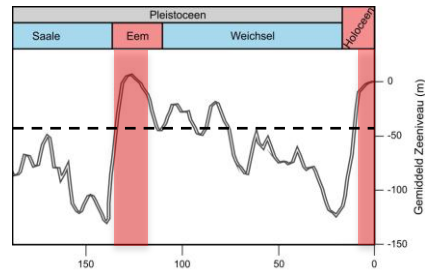
- Bewaringspotentieel:
 - geulen: laag (heel dynamisch = veel herwerking)
 - duinen/barrière: medium tot hoog
 - kustbarrière: hoog (goede bescherming tegen getijden)



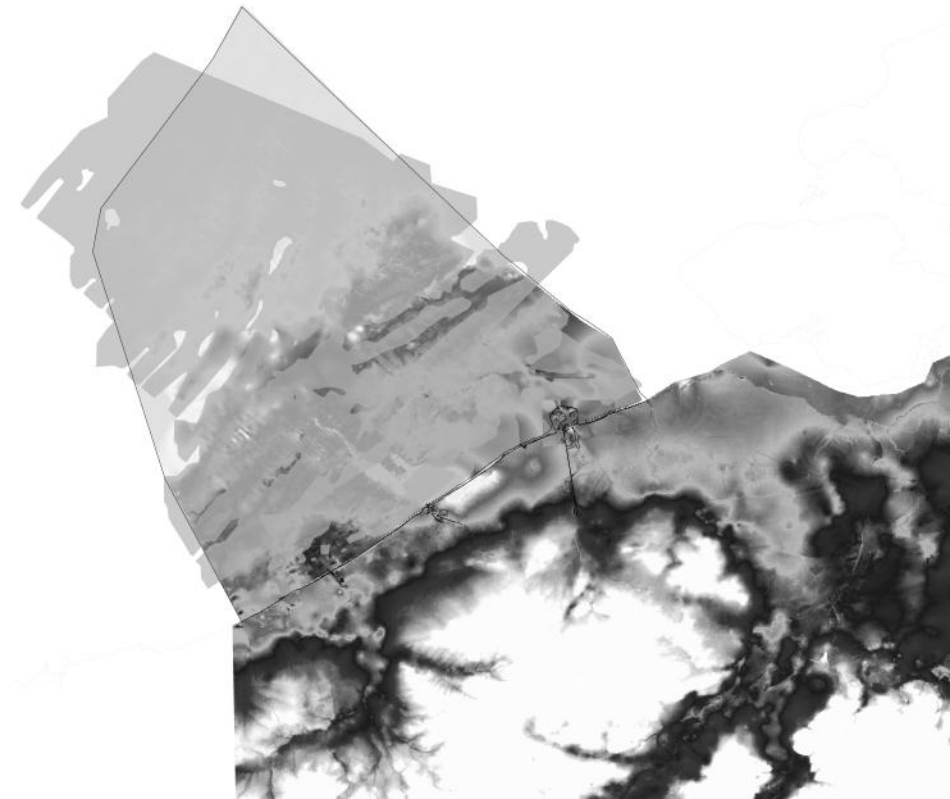
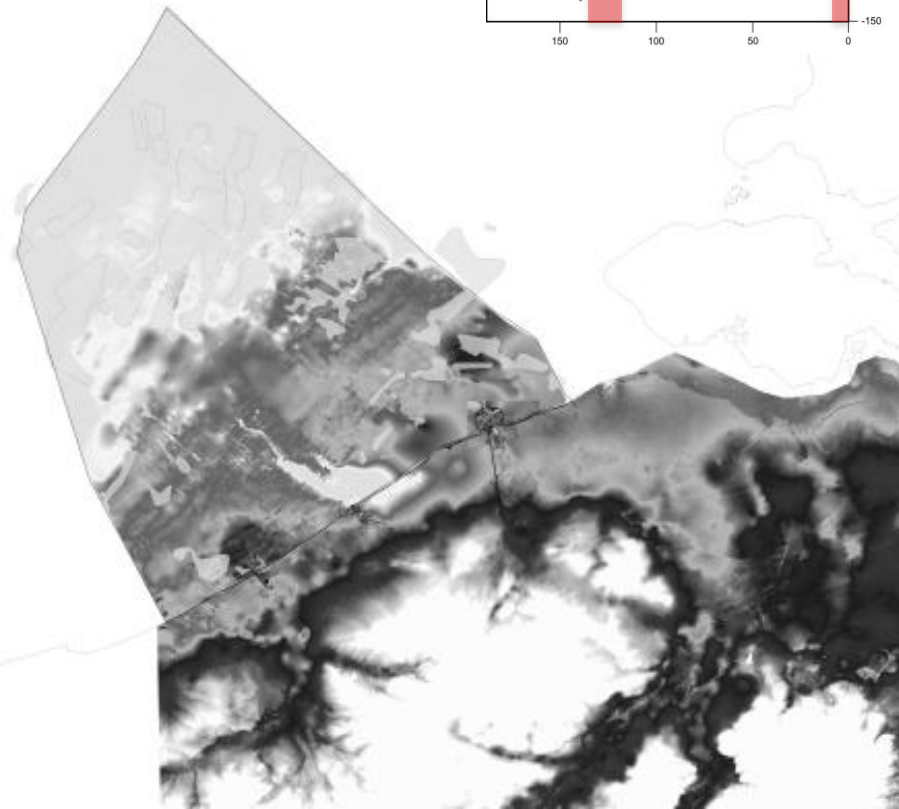
0 km 10 km

5. Wat is het archeologisch potentieel van deze resterende afzettingen?

mariene sedimenten



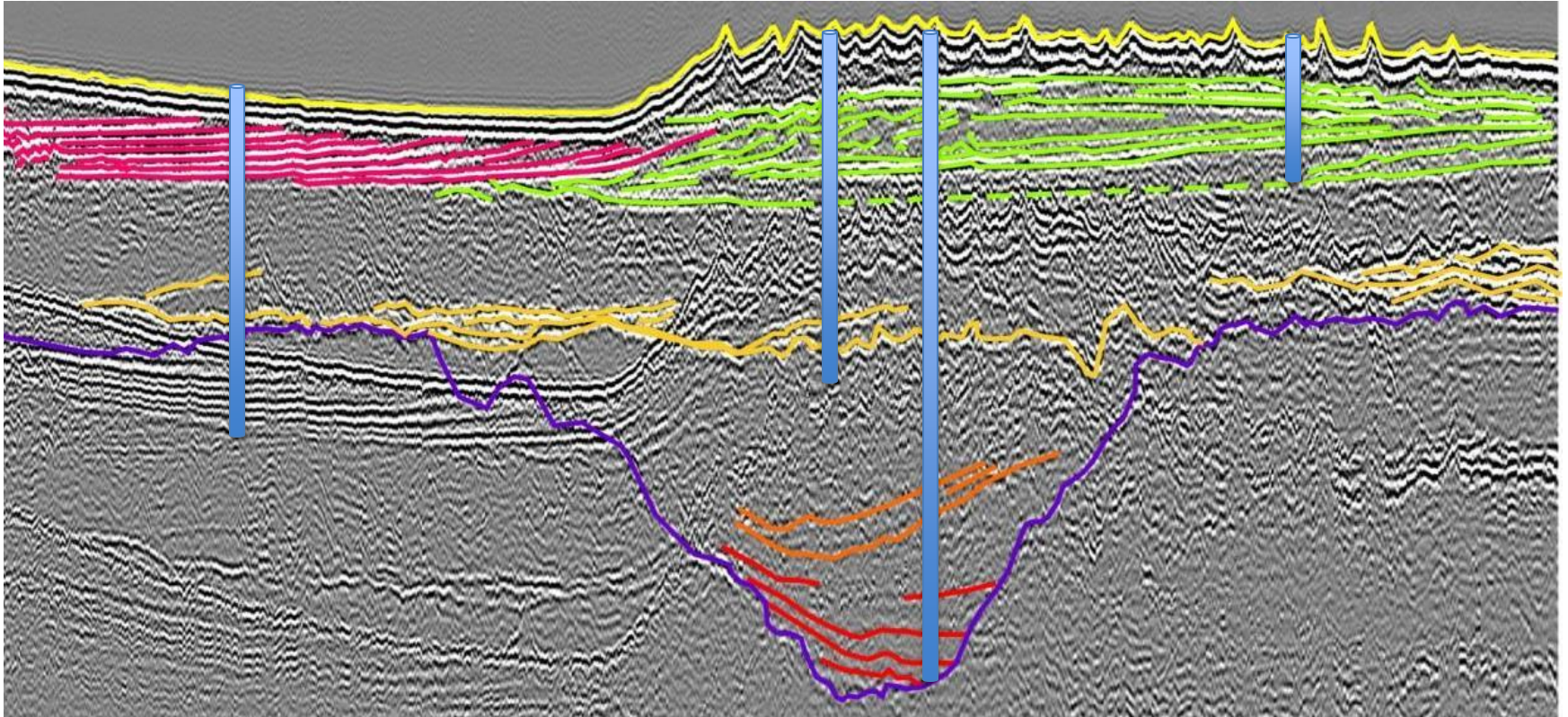
- Bewaringspotentieel:
 - laag (m.u.v. wrakken)
 - herwerkt materiaal
 - geen context



0 10 km

6. Hoe kunnen we inzicht krijgen in het archeologisch potentieel? (poster)

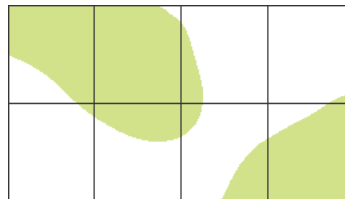
1) verband leggen tussen seismische gegevens en boringen op zee



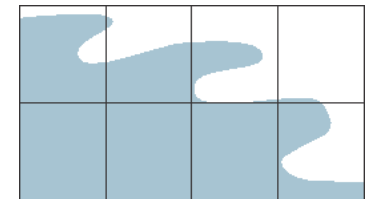
2) karteren van de verschillende eenheden



eenheid 1

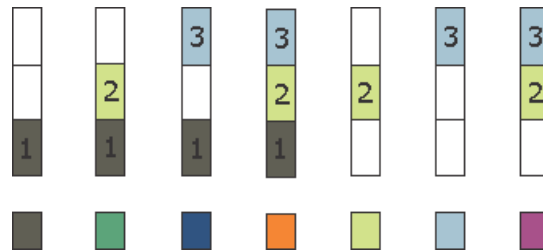
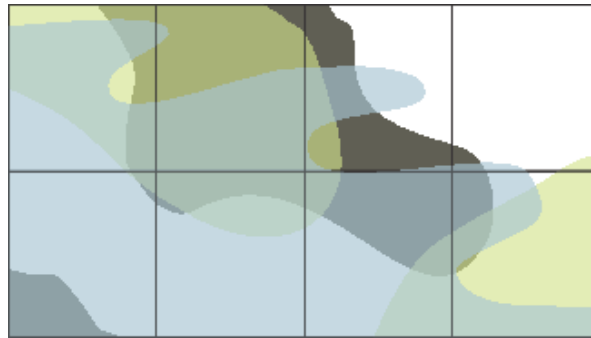
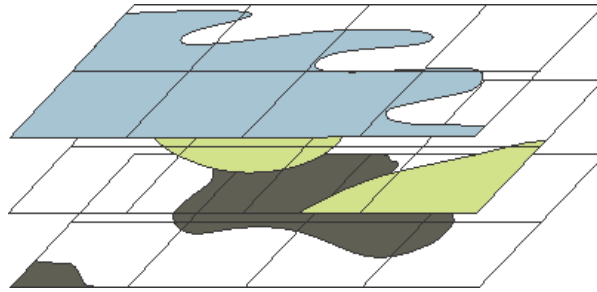


eenheid 2



eenheid 3

6. Hoe kunnen we inzicht krijgen in het archeologisch potentieel? (poster)



Referenties

- Ashton, N., Lewis, S.G., De Groote, I., Duffy, S.M., Bates, M., 2014. Hominin Footprints from Early Pleistocene Deposits at Happisburgh, UK. PLoS ONE 9(2): e88329. doi:10.1371/journal.pone.0088329
- Denys, L. and Baeteman, C., 1995. Holocene evolution of relative sea level and local mean high water spring tides in Belgium - a first assessment. Marine Geology, 124: 1- 19.
- Hijma, M.P., Cohen, K.M., Roebroeks, W., Westerhoff, W.E., Busschers, F.S., 2012. Pleistocene Rhine-Thames landscapes: geological background for hominin occupation of the southern North Sea region. Journal of Quaternary Science 27, 17-29.
- Hublin, J.-J., Weston, D., Gunz, P., 2009. Out of the North Sea: the Zeeland Ridges Neanderthal. Journal of Human Evolution 57: 777–785. DOI: 10.1016/j.jhevol.2009.09.001.
- Mathys, M. 2009. The Quaternary geological evolution of the Belgian Continental Shelf, southern North Sea. PhD thesis, Ghent University.
- Peeters, H., Murphy, P., Flemming, N., 2009. North Sea Prehistory Research and Management Framework (NSPRMF). Rijksdienst voor Cultureel Erfgoed/English Heritage: Amersfoort.
- Peeters, J., Busschers, F.S., Stouthamer, E., 2014, Fluvial evolution of the Rhine during the last interglacial-glacial cycle in the southern North Sea basin: A review and look forward, Quaternary International, <http://dx.doi.org/10.1016/j.quaint.2014.03.024>
- Ward, I., Larcombe, P., Firth, A. and Manders, M., 2014. Practical approaches to management of the marine prehistoric environment. Netherlands Journal of Geosciences, 93, pp 71-82 doi:10.1017/njg.2014.2
- Paap, B.F., Dubelaar, C.W., Gunnink, J.L. and Oost, A.P., 2012. Unraveling the shallow geology of the western Wadden Sea using high resolution seismics . Netherlands Journal of Geosciences, 91, pp 341-355 doi:10.1017/S0016774600000482
- Roebroeks, W., 2014. *Terra incognita*: The Palaeolithic record of northwest Europe and the information potential of the southern North Sea. Netherlands Journal of Geosciences, 93, pp 43-53 doi:10.1017/njg.2014.1
- Peeters, J.H.M. and Momber, G., 2014. The southern North Sea and the human occupation of northwest Europe after the Last Glacial Maximum. Netherlands Journal of Geosciences, 93, pp 55-70 doi:10.1017/njg.2014.3
- van Heteren, S., Meekes, J.A.C. , Bakker, M.A.J., Gaffney, V., Fitch, S., Gearey, B.R. and Paap, B.F., 2014. Reconstructing North Sea palaeolandscapes from 3D and high-density 2D seismic data: An overview. Netherlands Journal of Geosciences, 93, pp 31-42 doi:10.1017/njg.2014.4
- K.M. Cohen, P.L. Gibbard and H.J.T. Weerts (2014). North Sea palaeogeographical reconstructions for the last 1 Ma. Netherlands Journal of Geosciences, 93, pp 7-29 doi:10.1017/njg.2014.12
- Toucanne S, Zaragosi S, Bourillet J-F, et al. 2010. The first estimation of Fleuve Manche palaeoriver discharge during the last deglaciation: evidence for Fennoscandian ice sheet meltwater flow in the English Channel ca 20-18 ka ago. Earth and Planetary Science Letters 290: 459–473.